

Contract 2018 Collection Color Guide

Making something
beautiful is easy.
Making something
beautiful as well
as practical is my
passion.

— Sandy Chilewich



Contract 2018 Collection Color Guide

EN For detailed and current specifications, please visit our website: chilewichcontract.com/technical.
FR Pour plus de spécifications détaillées et actualités, veuillez visiter notre site web: chilewichcontract.com/technical.
DE Ausführliche Tests, Spezifikationen und Zertifizierungen finden Sie unter website: chilewichcontract.com/technical.
IT Per specifiche e notizie più dettagliate, visitare il nostro sito web: chilewichcontract.com/technical.
ES Para obtener especificaciones y noticias más detalladas, visite nuestro sitio web: chilewichcontract.com/technical.

Contents

5	Icons		
7	Floor Collection Tiles, Planks, Rolls, Rugs	35	Textiles Collection Wall, Window, Upholstery
9	Floor Icons	37	Textiles Icons
10	Bamboo	38	Bamboo
12	Basketweave	40	Basketweave
16	Bouclé	44	Bouclé
19	Dart	47	Dart
20	Frame	48	Frost
21	Frost	49	Lattice
22	Ikat	50	Ikat
24	Mini Basketweave	52	Mini Basketweave
26	Mixed Weave	54	Mosaic
27	Mosaic	55	Plaid
28	Plaid	56	Reed
29	Reed	57	Rib Weave
30	Rib Weave	58	Shade
31	Shade	59	Speckle
32	Speckle	60	Tidal
33	Wave	61	Twill
		62	Wave

Icons

Chilewich redefines textiles

Nearly twenty years after New York designer Sandy Chilewich introduced her woven textiles to the international design community, our unique coverings for floors and walls continue to push the boundaries of form and function. The ever-evolving collection, which is designed and produced in the United States, combines innovative weaves and a distinctive color palette with extraordinary durability and easy maintenance.

chilewichcontract.com

TerraStrand®

BioFelt®

BackLess®



PROTECTED FROM MOLD ON
MICROBAN®



*ACT © Registered Certification Marks



Chilewich yarns use phthalate-free, vegetable-based compounds in place of petroleum-based plasticizers. These innovative yarns, and the fabrics made from them, are called TerraStrand®. Consisting of a minimum of 18% rapidly renewable content, Chilewich products qualify to earn LEED points.

BioFelt® is a composite tile and roll backing system composed of 27% post-consumer content. Installed with adhesives, it offers cushioning underfoot and waterproof protection from spills and stains. This backing protects the surface below from water intrusion while providing a flooring that is easier to clean and quicker to dry.

Chilewich's scrimless wall textiles with a proprietary adhesive that are easy to install and provide Type III wall protection performance.

Low in volatile organic compounds, Chilewich flooring products comply with the Green Label Plus® certifications which are recognized by the U.S. Green Building Council, and therefore Chilewich products qualify to earn LEED points.

Chilewich textile products comply with GreenGuard® programs. GreenGuard® certifications are recognized by the U.S. Green Building Council, and therefore Chilewich products qualify to earn LEED points.

Chilewich products contain Microban® and inhibit the growth of mold and mildew.

All Chilewich Contract products have up-to-date Health Product Declarations and Environmental Product Declarations. Chilewich | Sultan, LLC has achieved a UL Environmental Product Declaration certification.

Chilewich Contract flooring meets or exceeds all industry specifications in the United States and Europe for heavy-duty applications.

All Chilewich Contract textiles are certified by the Association for Contract Textiles for Flammability and four aspects of fabric durability: Wet & Dry Crocking, Colorfastness to Light, Physical Properties, and Abrasion in High-Traffic Areas. These registered certification marks for voluntary performance guidelines assure that the fabrics meet or exceed contract standards and pass all applicable testing.

All Chilewich Contract floor and textile products are designed and manufactured in the United States and ship from Chatsworth, Georgia and/or Barcelona, Spain.

Floor Collection



Tiles, Planks, Rolls, Rugs

Floor Icons

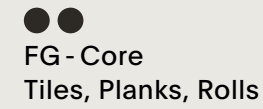
P - Core | Stock and Custom Rugs

Made of sturdy woven vinyl with a polyester core, this textile is appropriate for light-duty commercial applications and all residential applications. It is easy to maintain and can be used both indoors and outdoors.



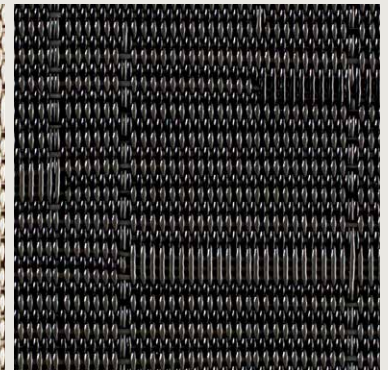
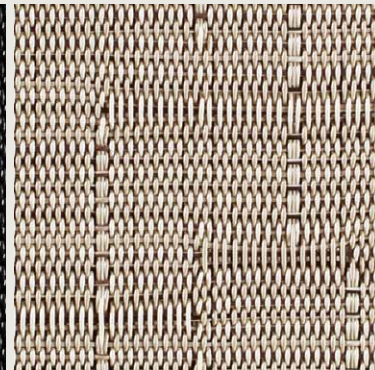
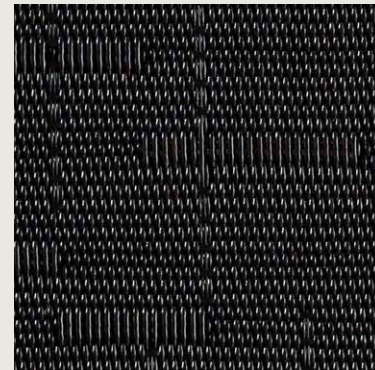
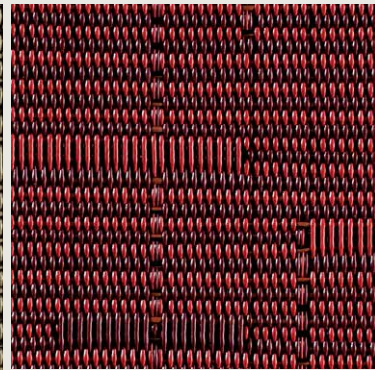
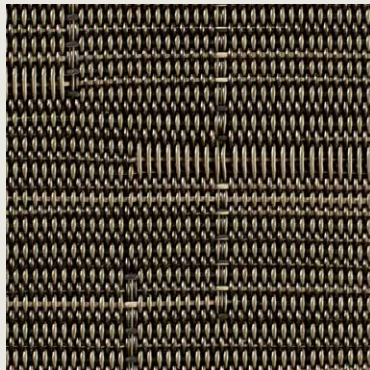
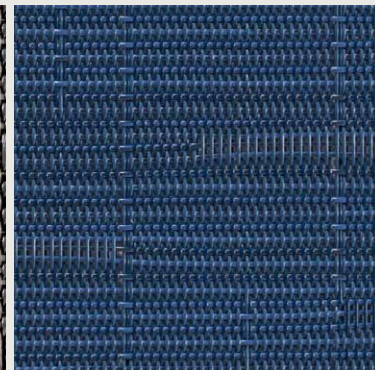
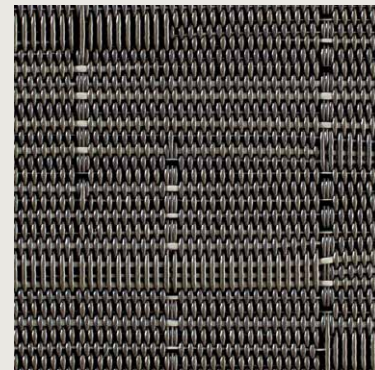
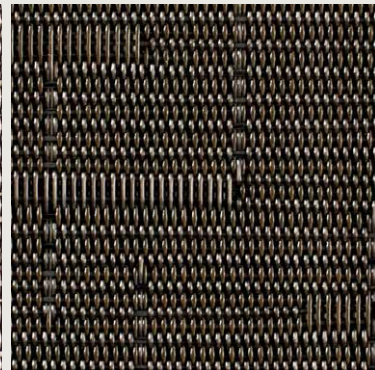
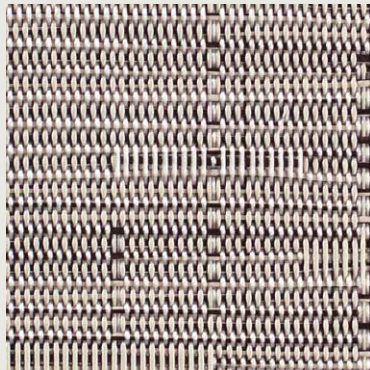
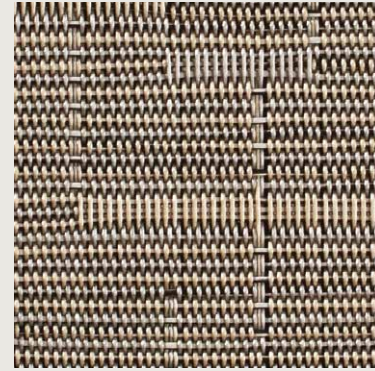
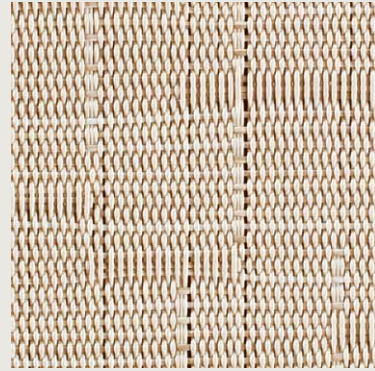
FG - Core | Tiles, Planks, Rolls, and Rugs

Made of sturdy woven vinyl with a fiberglass core for trouble-free seaming, this textile is engineered for durability in even the most highly trafficked areas. It is appropriate for all applications, including heavy-duty commercial applications.



Bamboo™

Rugs



CAMEL

CHALK
CHARCOAL

CHINO
CHOCOLATE
CRANBERRY

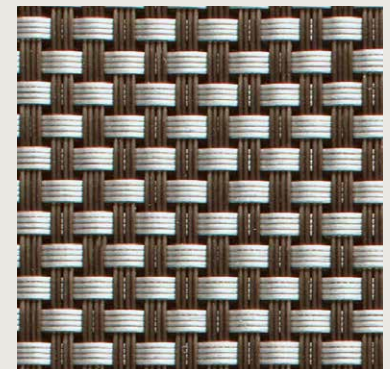
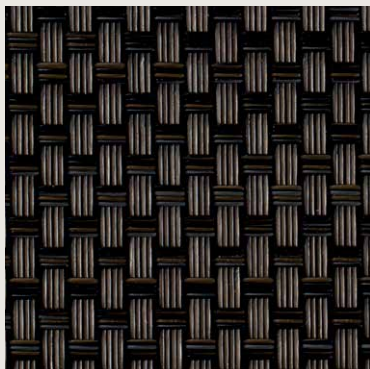
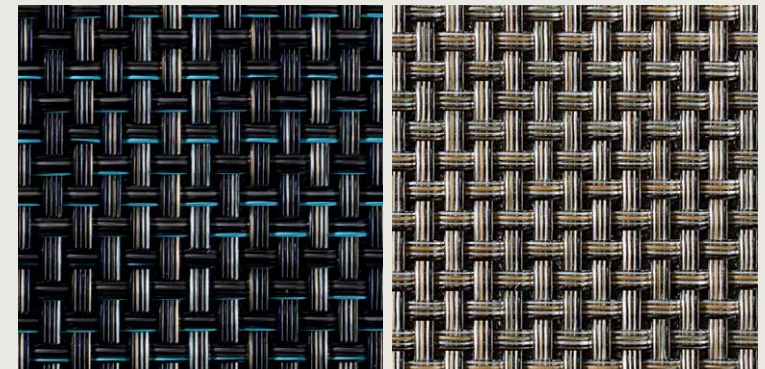
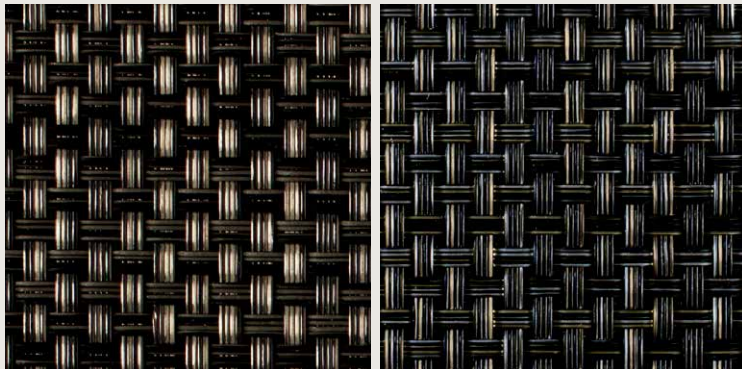
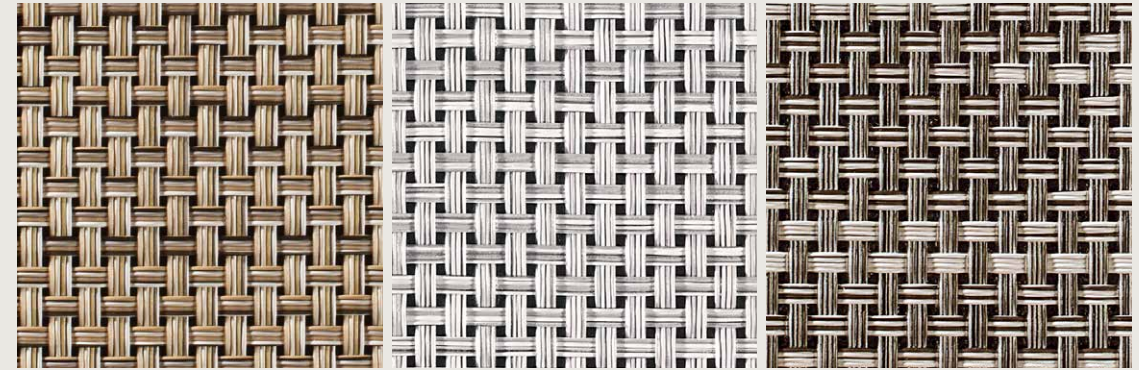
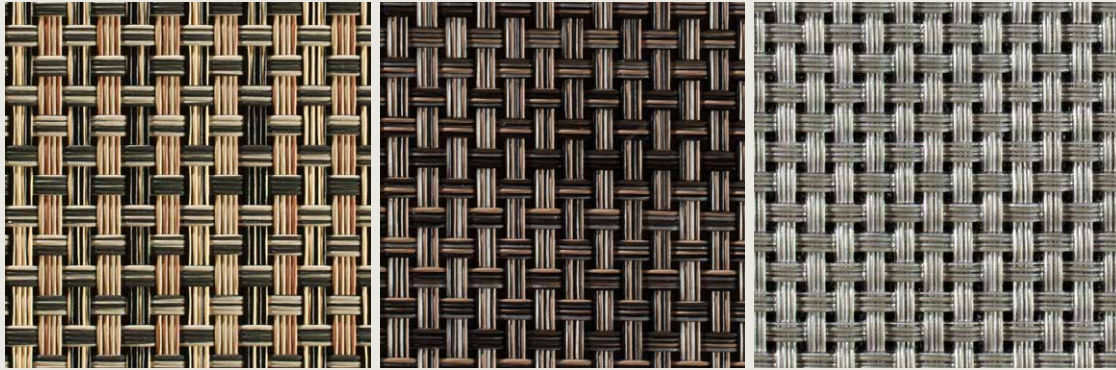
DUNE
GREY FLANNEL
JET BLACK

LAPIS
OAT

SMOKE

Basketweave™

Tiles, Planks, Rolls, Rugs



BARK
CARBON
CHESTNUT

EARTH
GALVANIZED STEEL

GLACIER

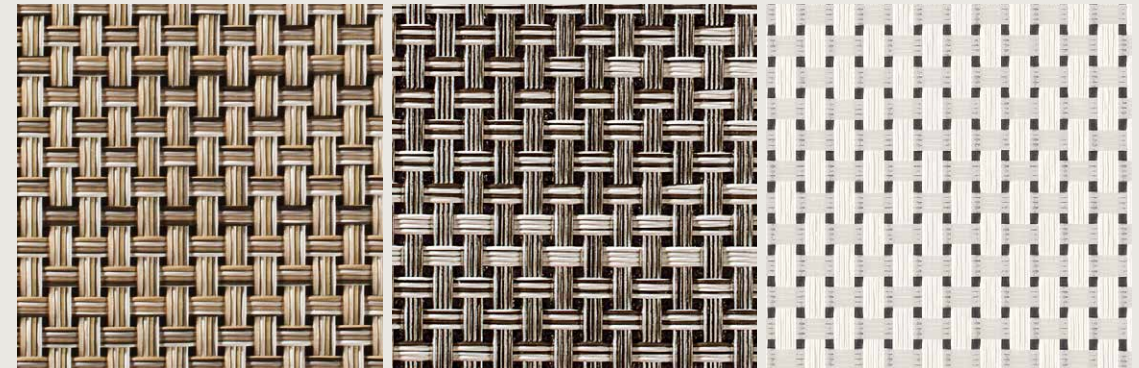
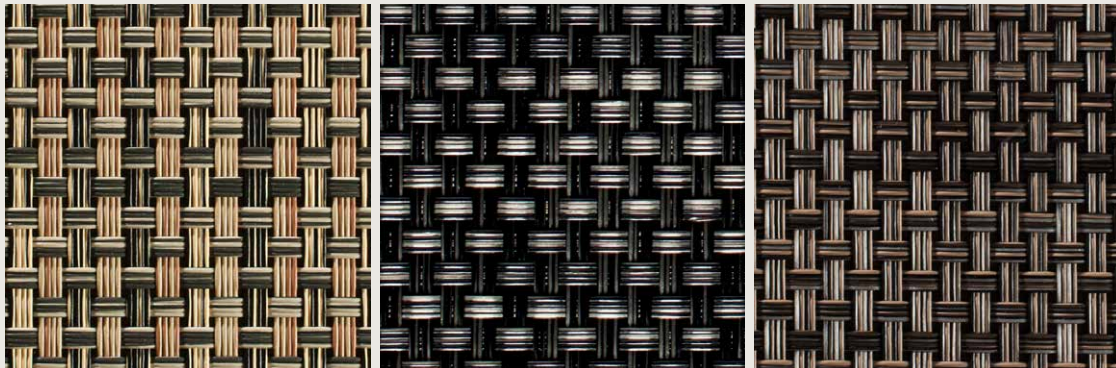
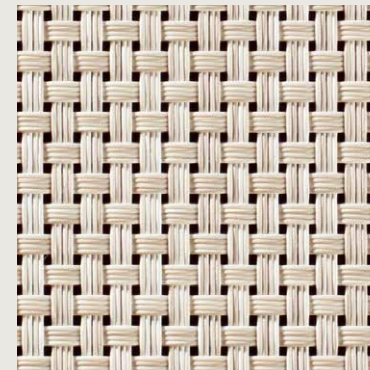
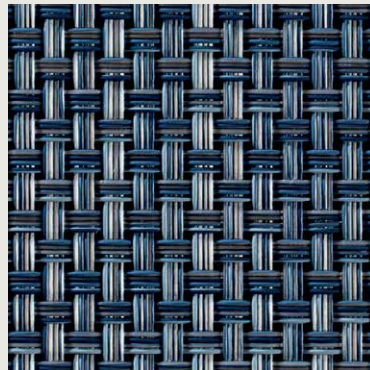
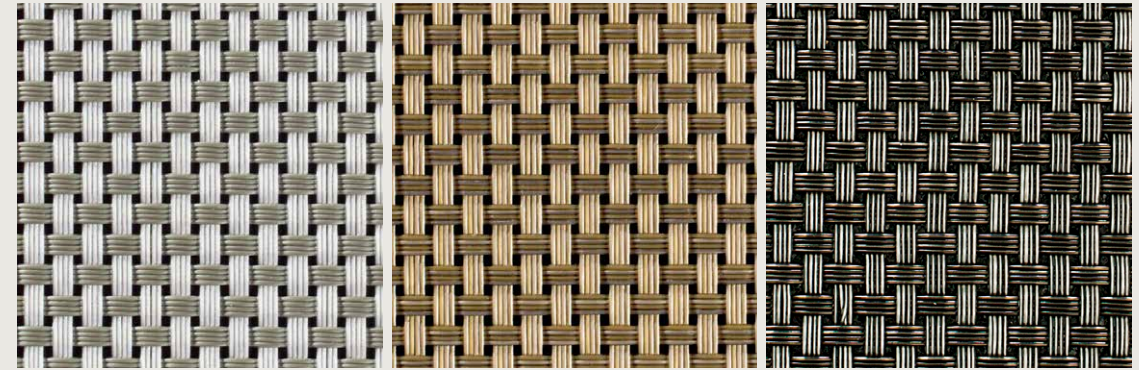
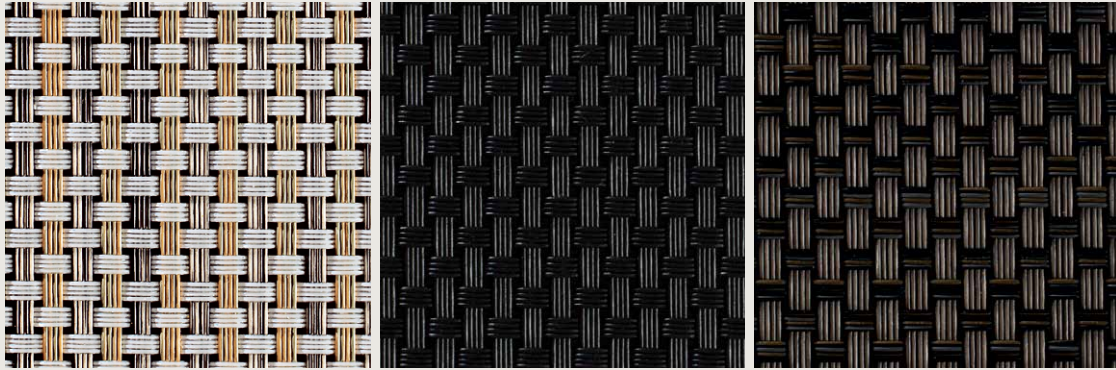
LATTE

MARBLE
MINERAL BLUE

OYSTER
PLATINUM
TITANIUM

Basketweave™

Rugs



ALUMINIUM

BLACK

CHESTNUT

ICE

NEW GOLD

TITANIUM

BARK

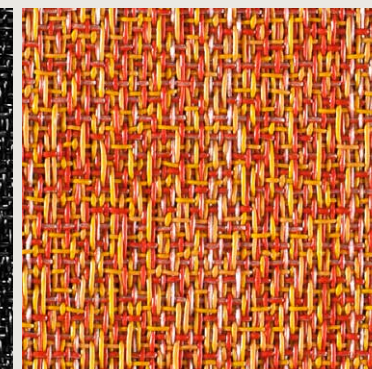
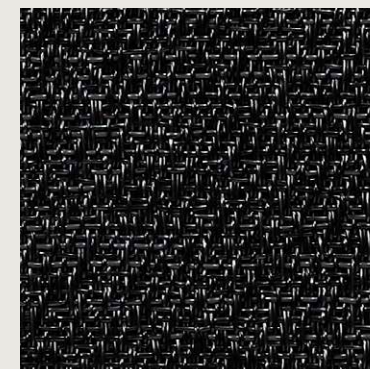
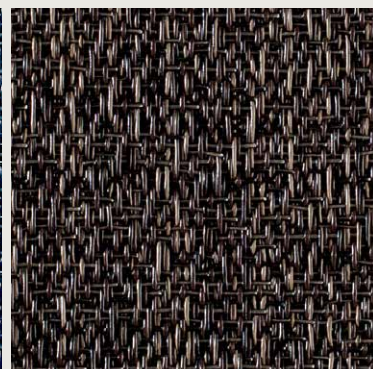
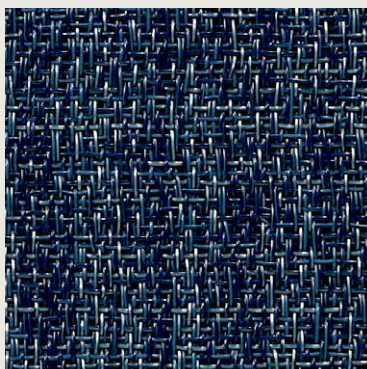
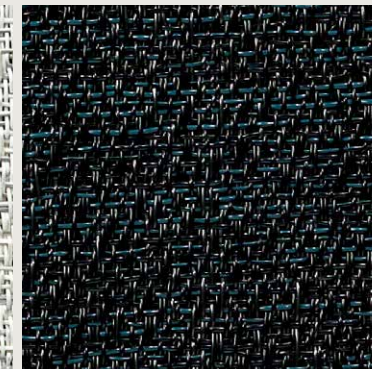
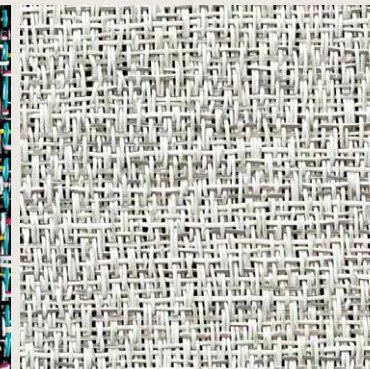
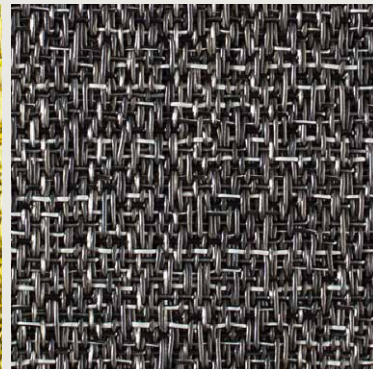
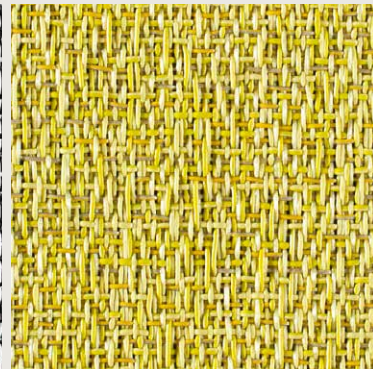
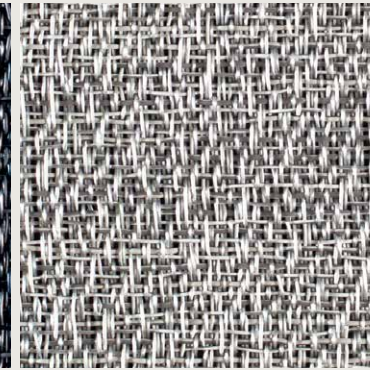
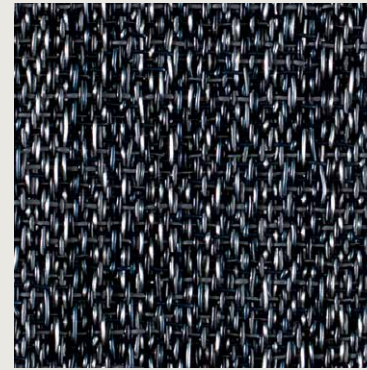
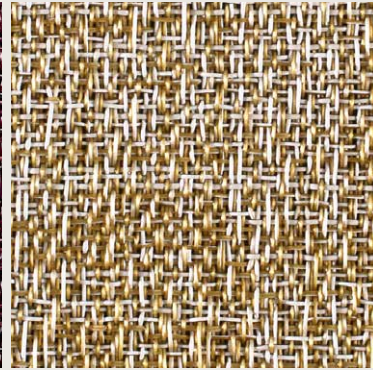
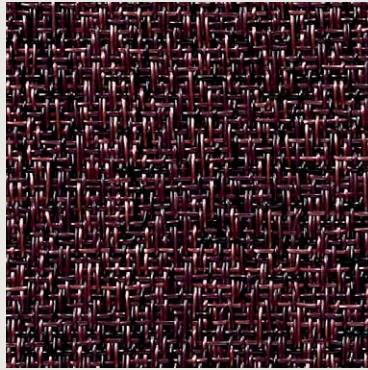
CARBON

DENIM
EARTH

KHAKI
LATTE

OYSTER

WHITE



BLACK/WHITE
BLUEBERRY - NEW

CABERNET - NEW
CITRON
COFFEE

CORN SILK
GREY

INK
MÉLANGE

MOON
NEWSPRINT - NEW
NOIR - NEW

OCEAN - NEW
ORANGE

Bouclé™

Tiles, Planks, Rolls, Rugs



PEBBLE
SALT

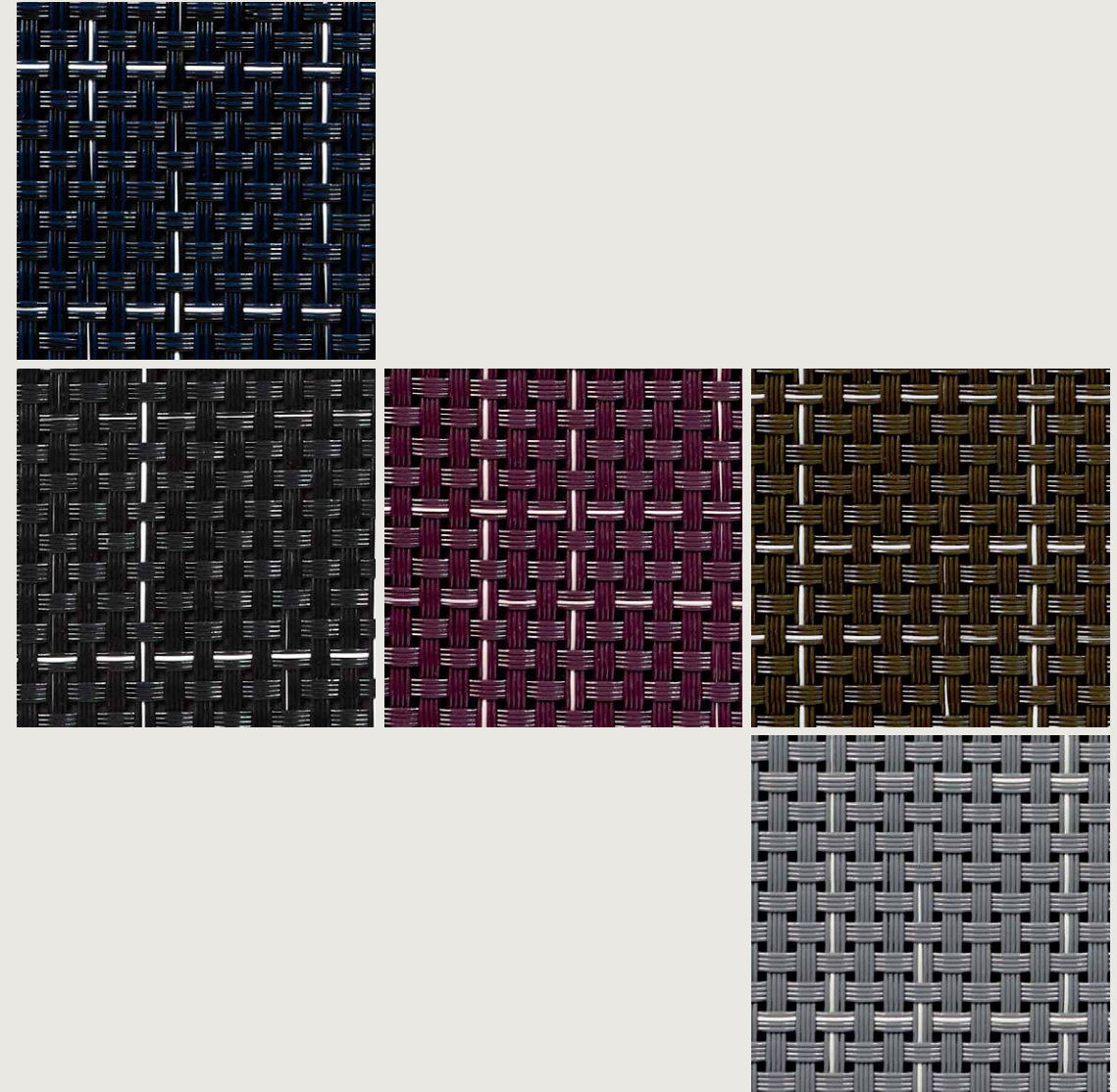
SEAWEED - NEW
SISAL
STERLING

TURQUOISE
WHITE/BLACK

●●
FG - Core

NEW Dart™

Tiles, Planks, Rolls, Rugs



MIDNIGHT
ONYX

PLUM

TOBACCO
STORM

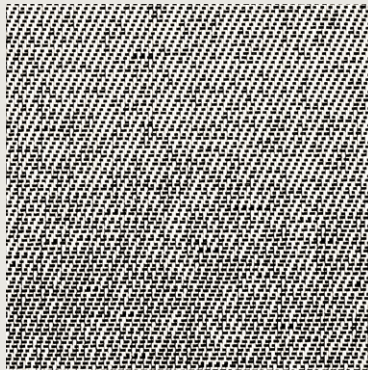
●●
FG - Core

NEW Frame™

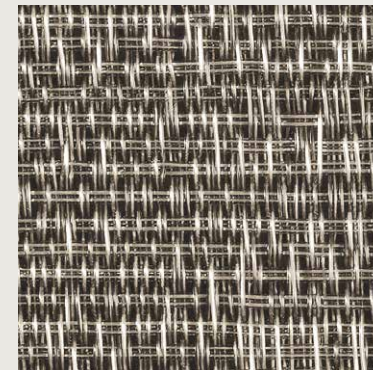
Rugs

Frost™

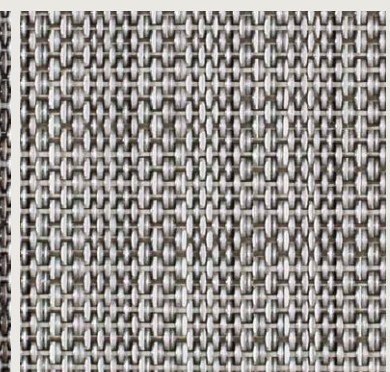
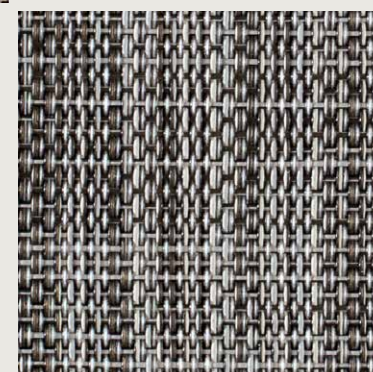
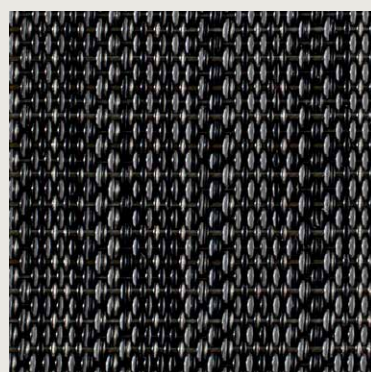
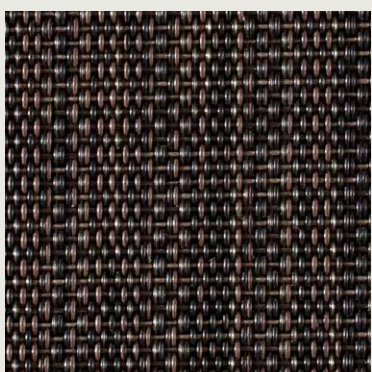
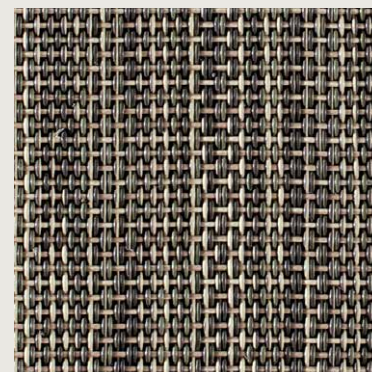
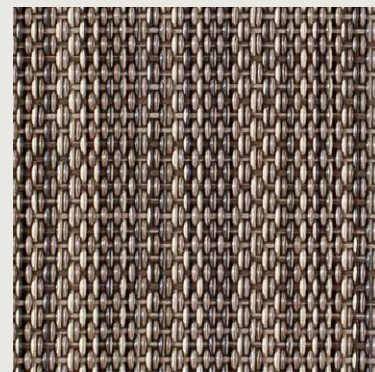
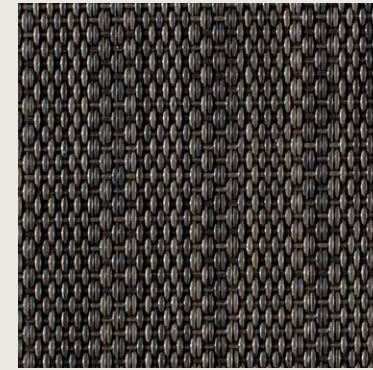
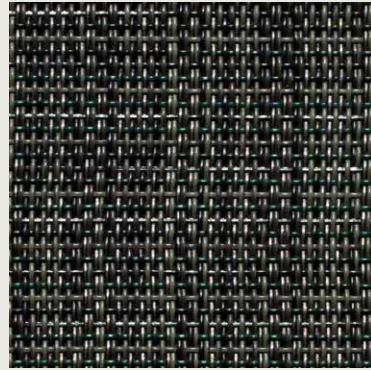
Rugs



GREY



MINERAL



BONE

DARK GREEN

FAWN

STONE

SLATE

WALNUT

DARK BROWN

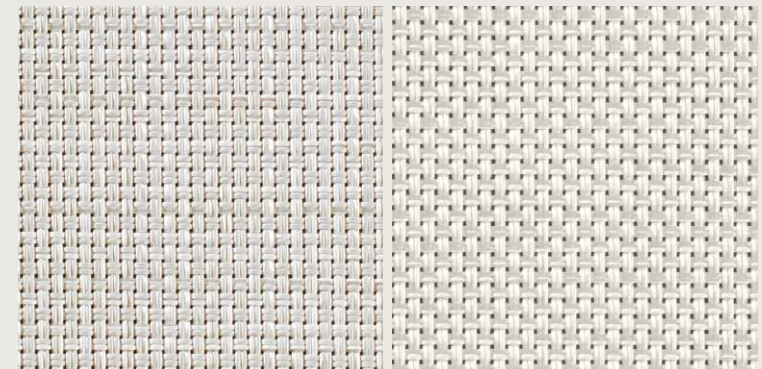
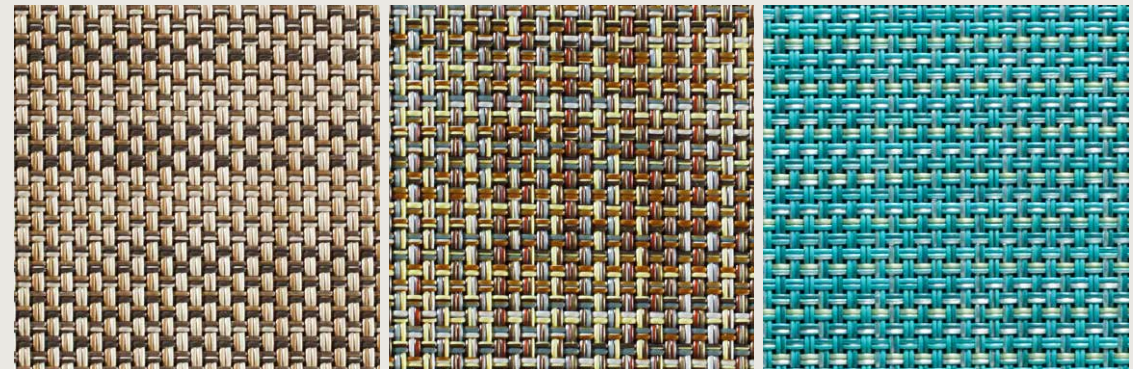
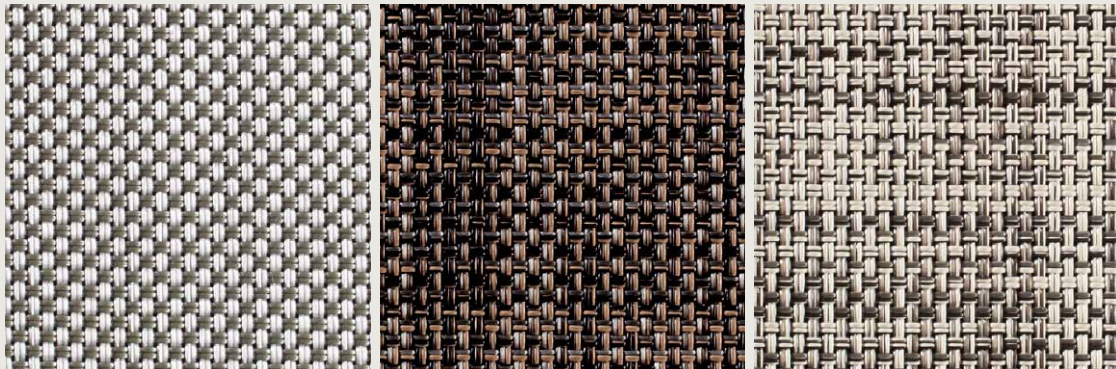
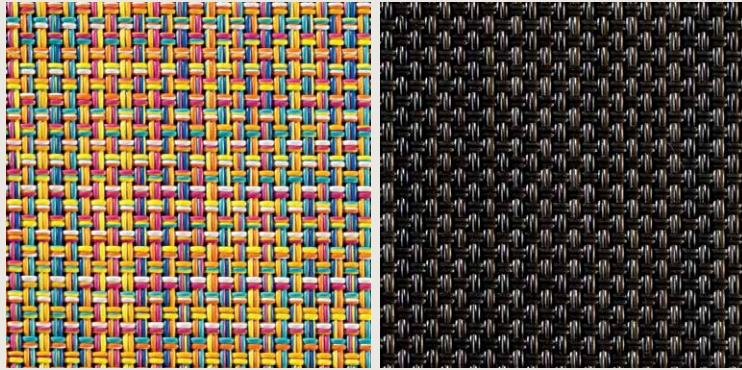
DEEP GREY

TWEED

WHITE/SILVER

Mini Basketweave™

Rugs



ALOE
BLACK

CONFETTI
DARK WALNUT
DILL

ESPRESSO
GRAVEL

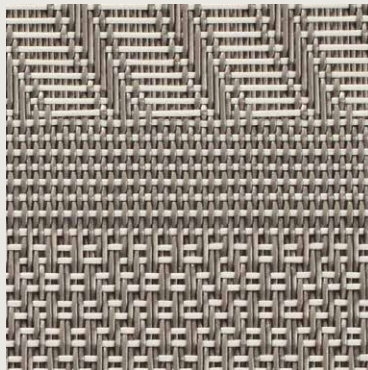
LIGHT GREY
LINEN

PARCHMENT
PISTACHIO
SANDSTONE

TURQUOISE
WHITE

● NEW Mixed Weave™

Rugs

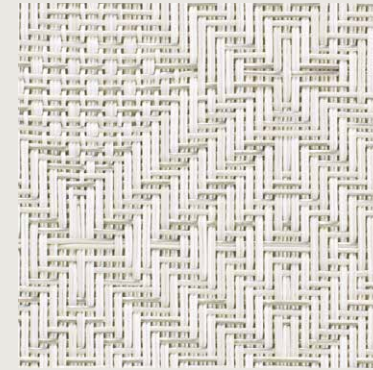


TOPAZ

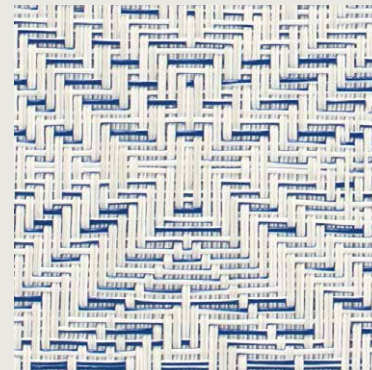
● P - Core

● NEW Mosaic™

Rugs

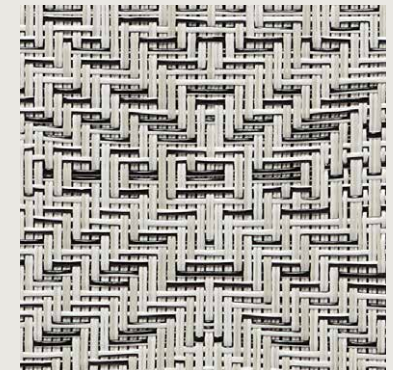


GREY

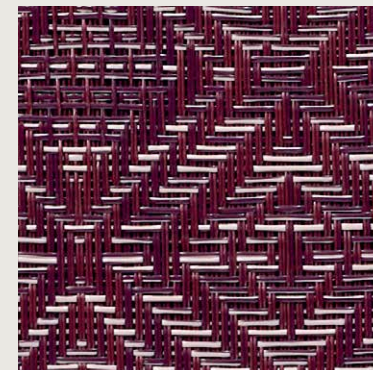


BLUE

● P - Core



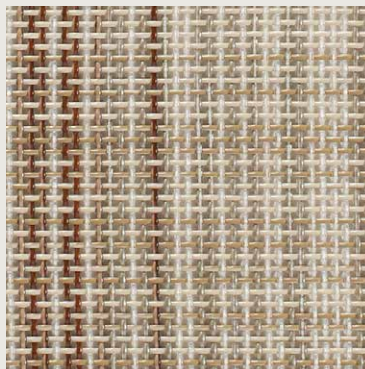
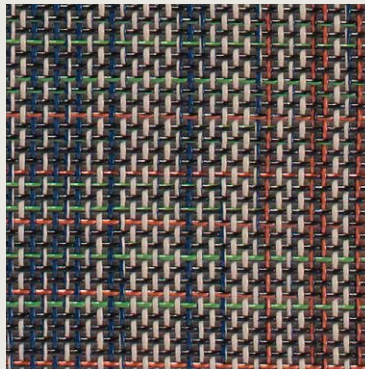
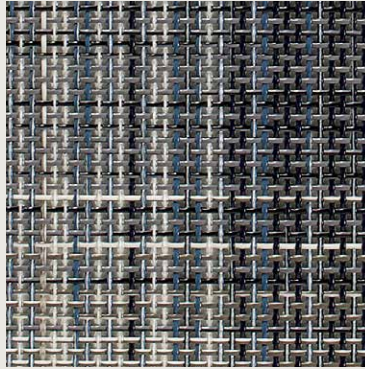
WHITE/BLACK



PLUM - NEW

Plaid™

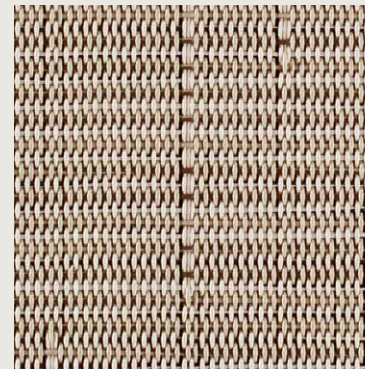
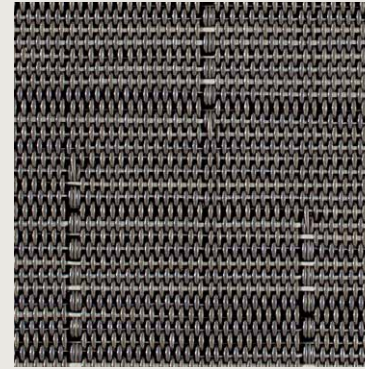
Tiles, Planks, Rolls, Rugs



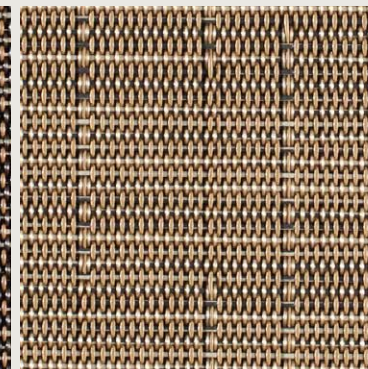
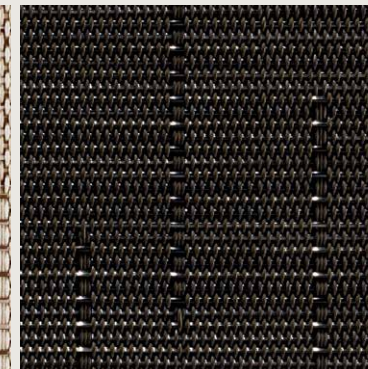
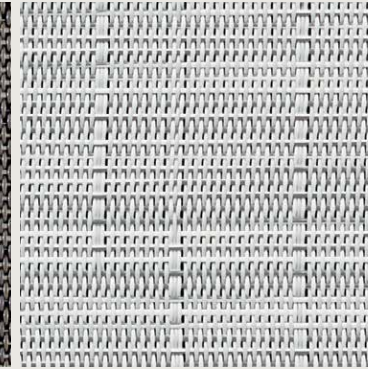
GREY
MULTI
TAN

Reed™

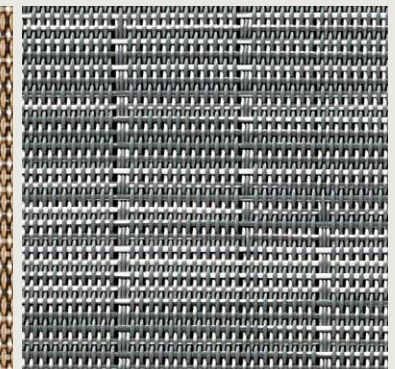
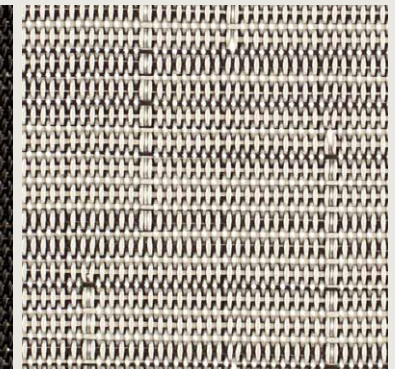
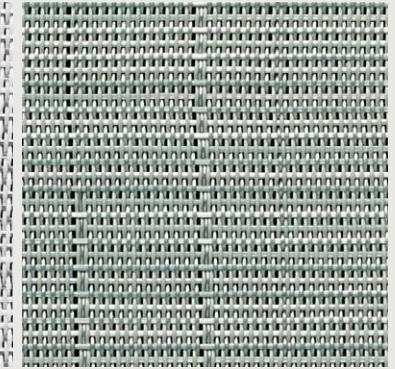
Tiles, Planks, Rolls, Rugs



ASH
BISQUE
CINNAMON



CLOUD - NEW
CLOVE
SANDBAR



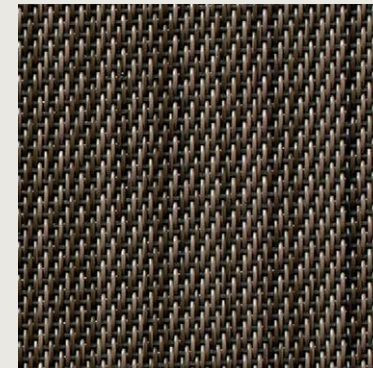
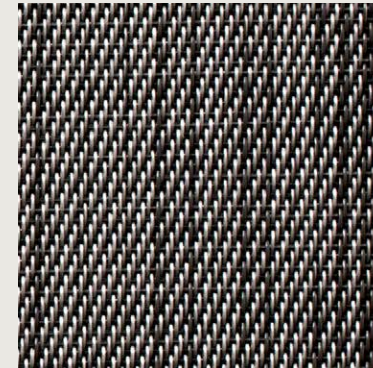
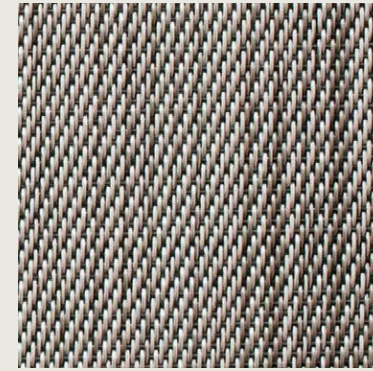
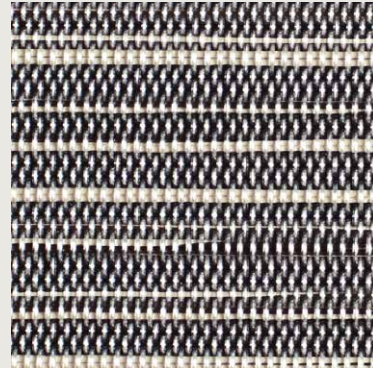
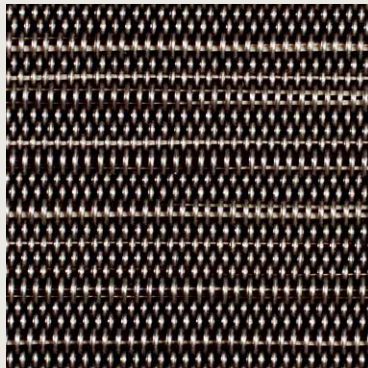
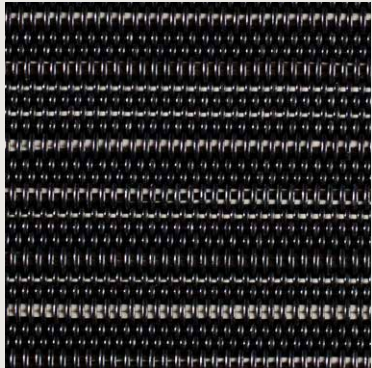
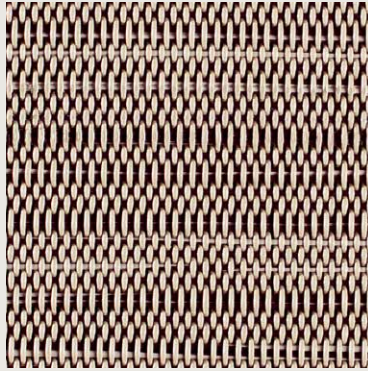
SEAFOAM - NEW
SEASHELL
STEEL - NEW

Rib Weave™

Tiles, Planks, Rolls, Rugs

Shade™

Tiles, Planks, Rolls, Rugs



COCONUT

LEAD

PEARL

BIRCH
CHROME
HICKORY

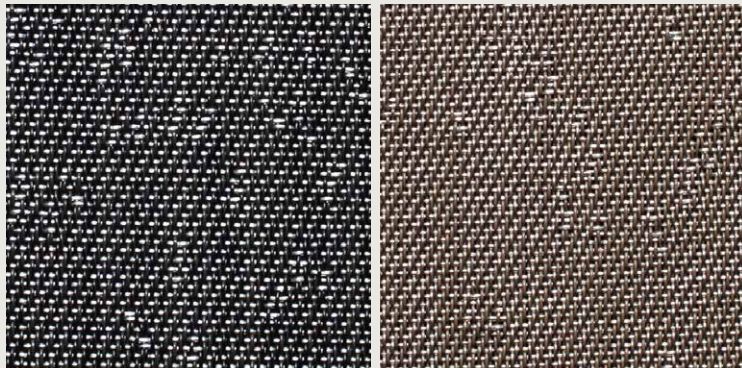
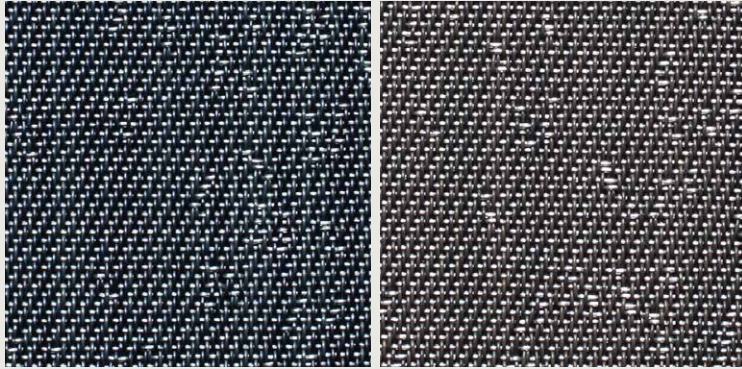
BLACK

Speckle™

Tiles, Planks, Rolls, Rugs

NEW Wave™

Rugs

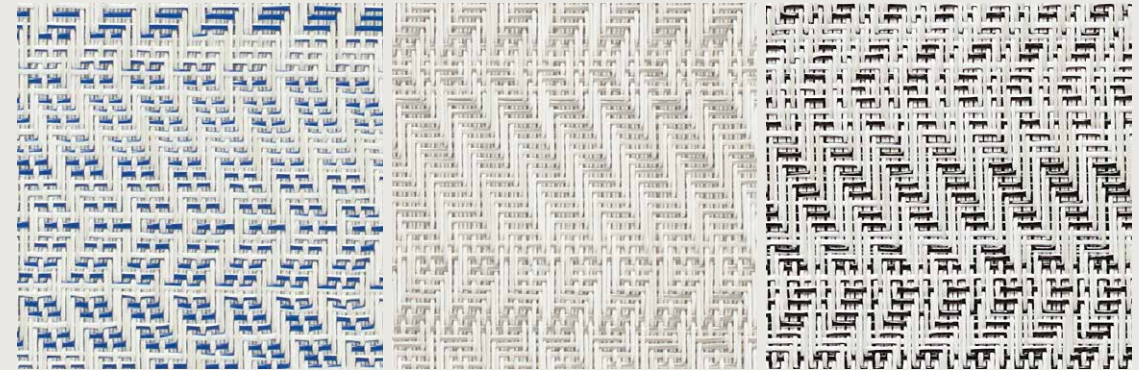


BLUE

MERCURY

ONYX

TAUPE



BLUE

GREY

WHITE / BLACK

Textiles Collection



Wall, Window, Upholstery

Textiles Icons

P - Core | Windows, Upholstery, and Wall Textiles (Category VI, Type III)

Made of sturdy woven vinyl with a polyester core, this textile offers wall protection performance appropriate for all applications, including high-traffic commercial applications. The upholstery is also appropriate for all applications, including high-traffic commercial applications. It is easy to maintain and can be used both indoors and outdoors.

●
P - Core



●
Lattice
P - Core



FG-Core | Wall Textiles (Category VI, Type III)

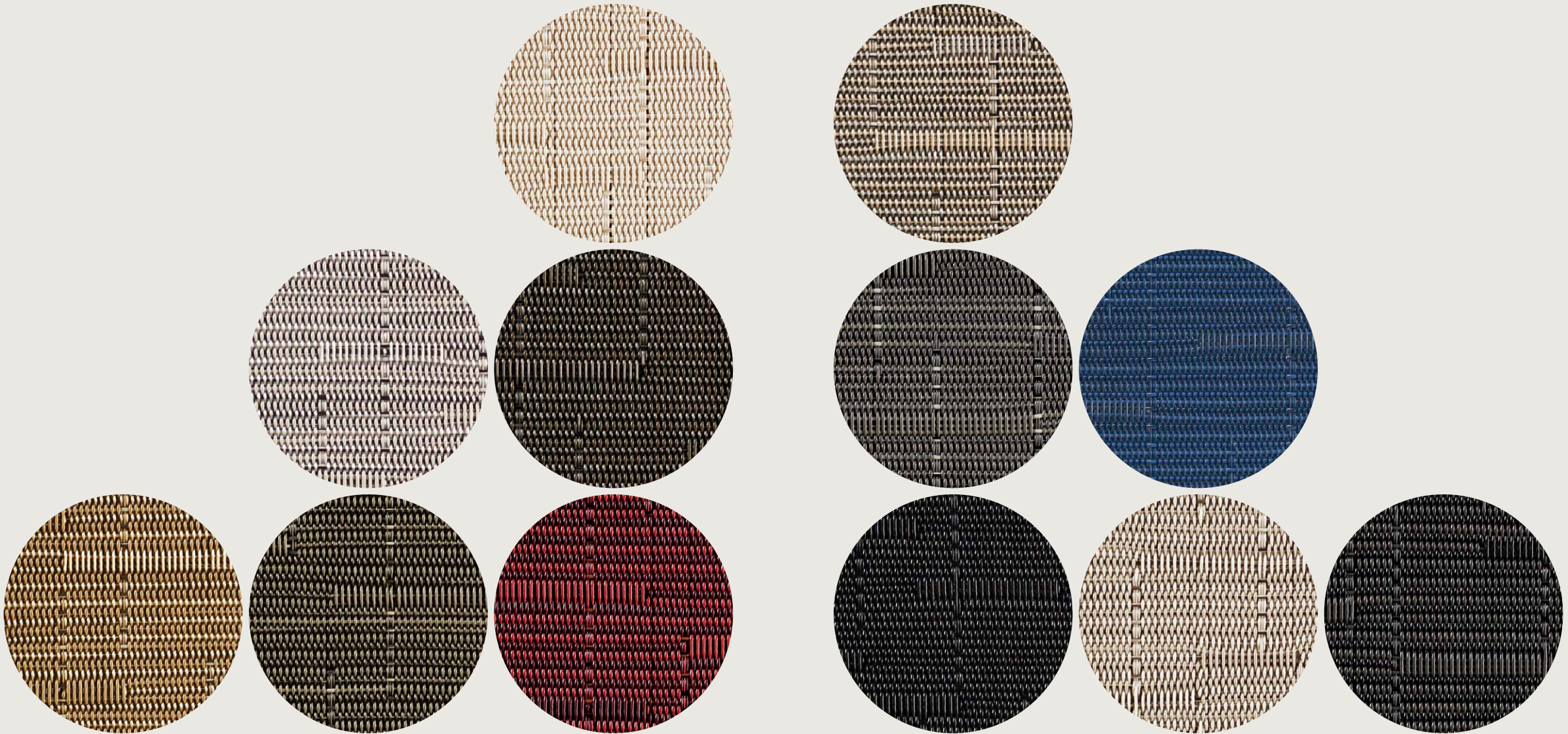
Wall protection performance appropriate for all applications, including high traffic commercial applications.

● ●
FG - Core



Bamboo™

BackLess® Wall Textiles,
Window Coverings, Upholstery Fabric



CAMEL

CHALK
CHARCOAL

CHINO
CHOCOLATE
CRANBERRY

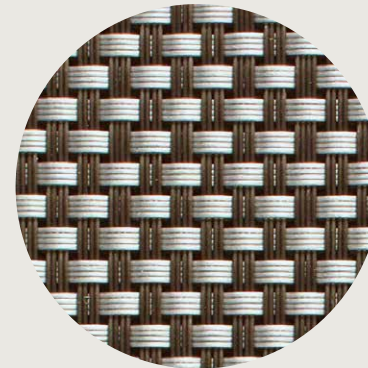
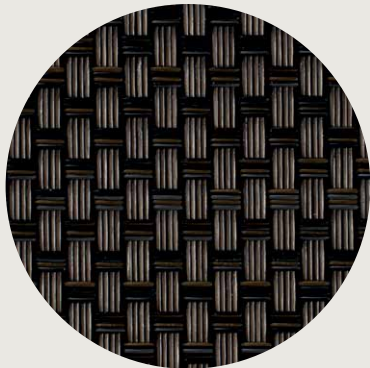
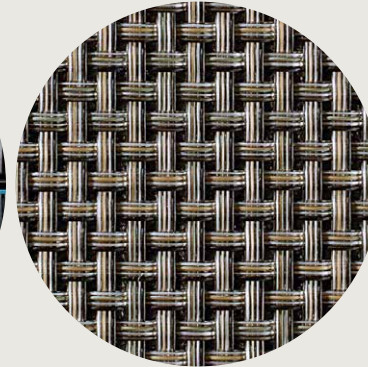
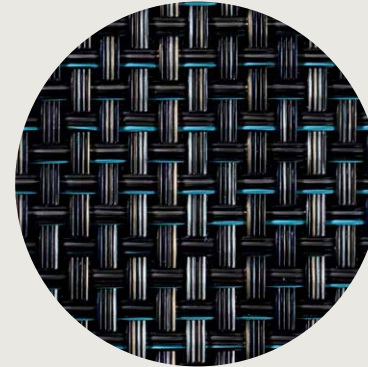
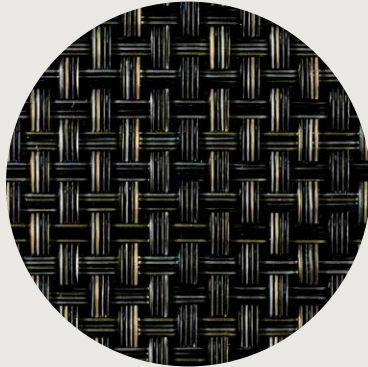
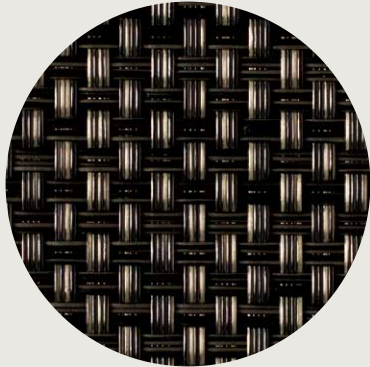
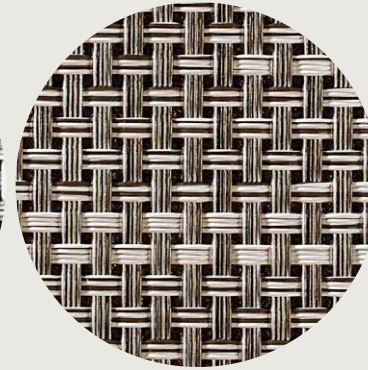
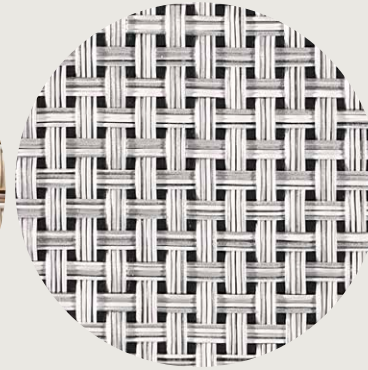
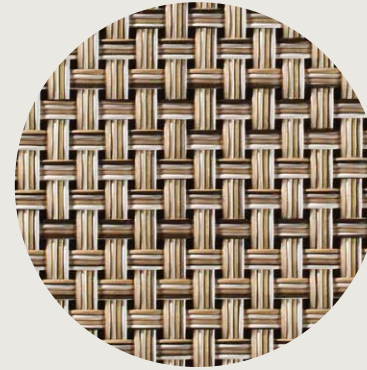
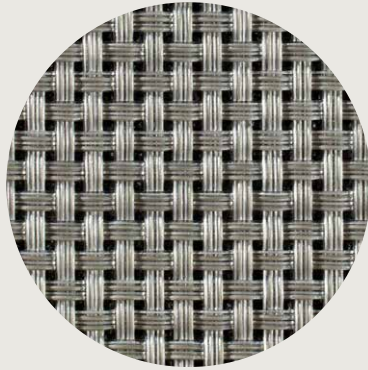
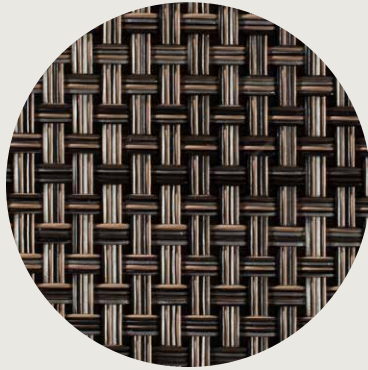
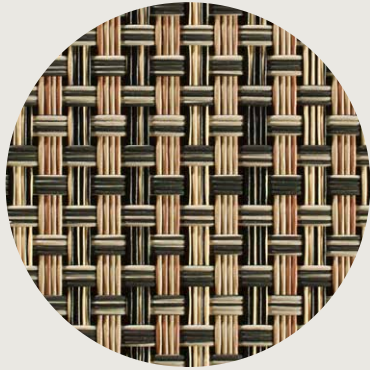
DUNE
GREY FLANNEL
JET BLACK

LAPIS
OAT

SMOKE

Basketweave™

BackLess® Wall Textiles,
Window Coverings



BARK
CARBON
CHESTNUT

EARTH
GALVANIZED STEEL

GLACIER

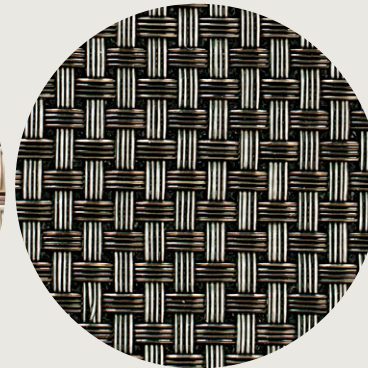
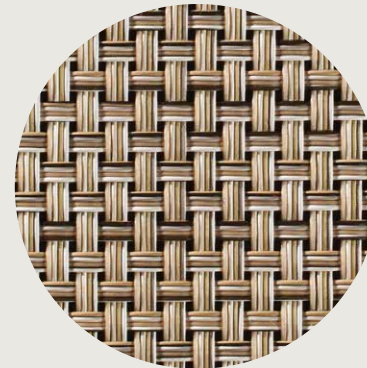
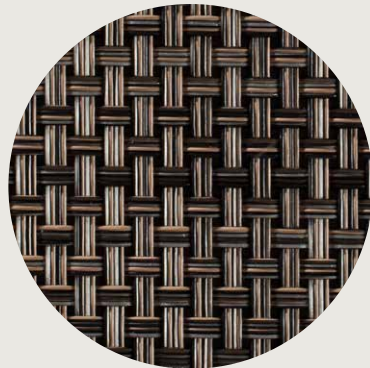
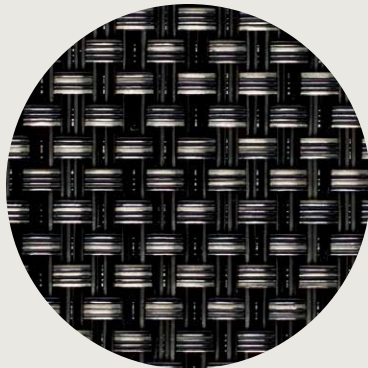
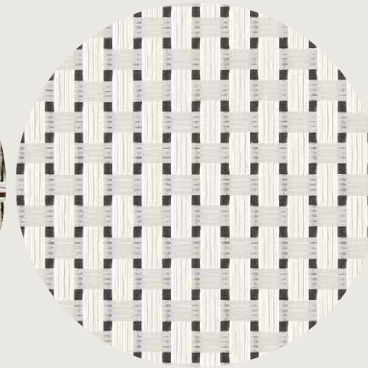
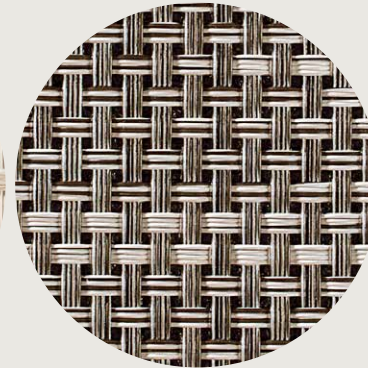
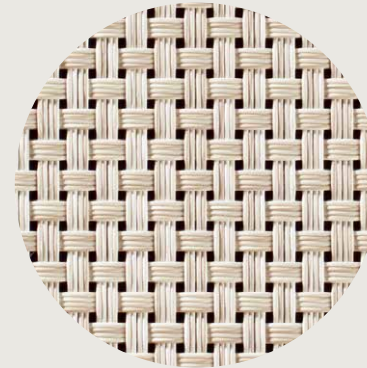
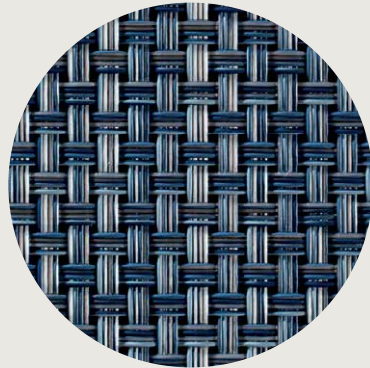
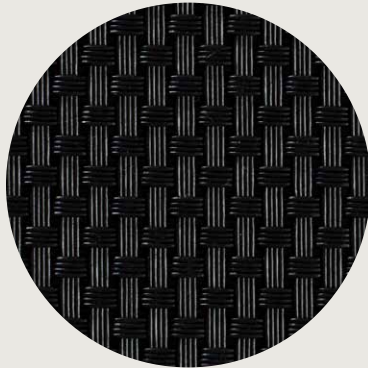
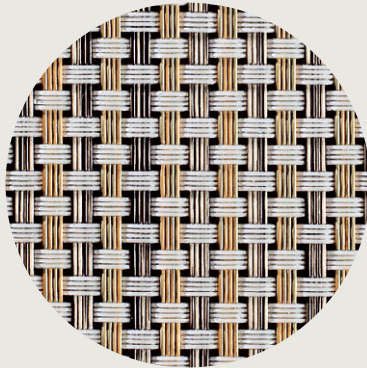
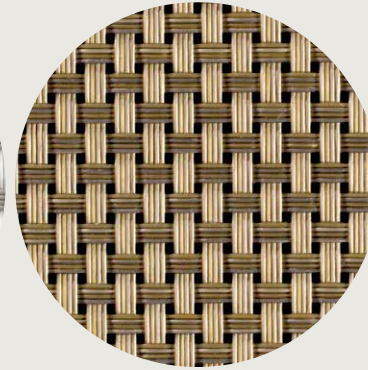
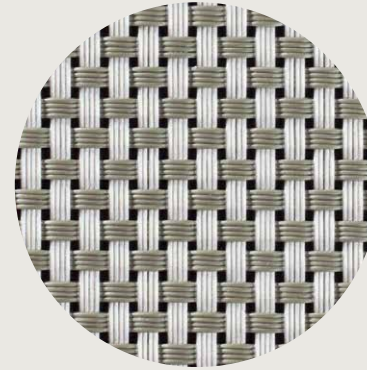
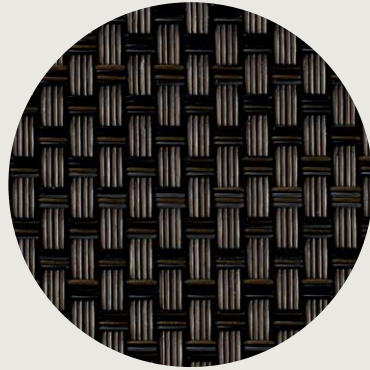
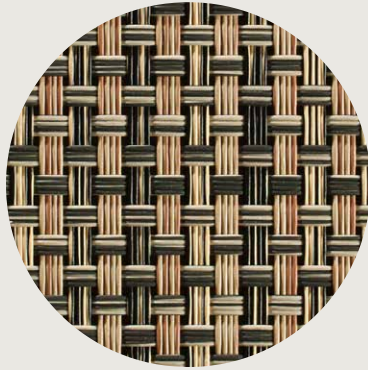
LATTE

MARBLE
MINERAL BLUE

OYSTER
PLATINUM
TITANIUM

Basketweave™

BackLess® Wall Textiles,
Window Coverings, Upholstery Fabric



ALUMINIUM

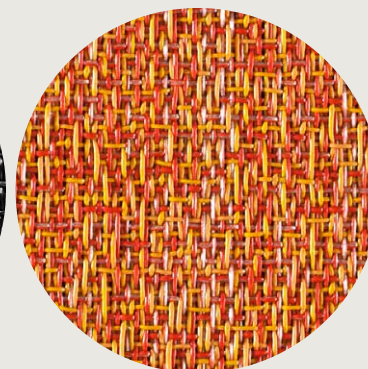
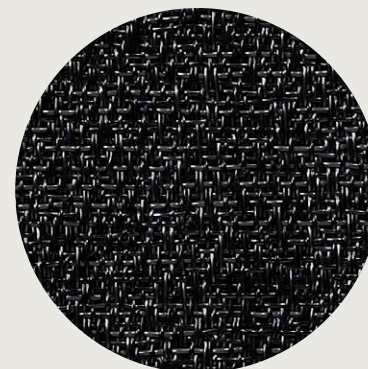
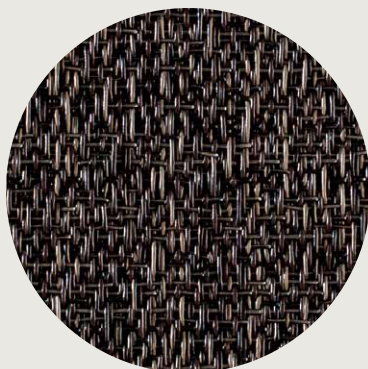
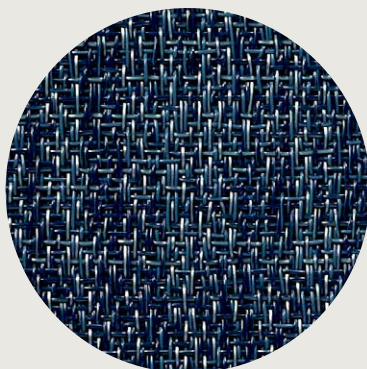
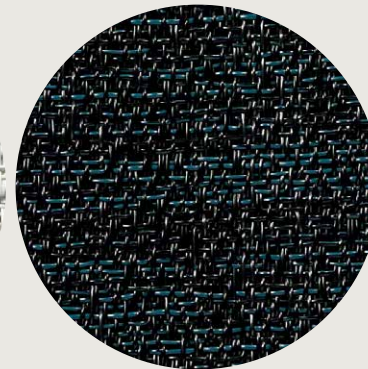
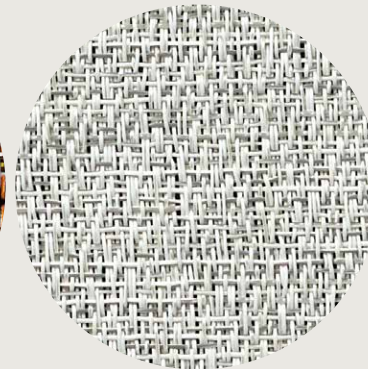
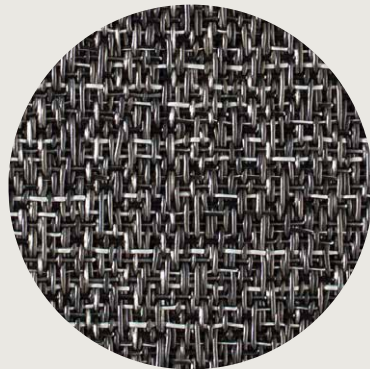
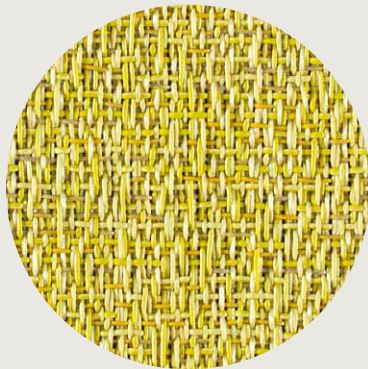
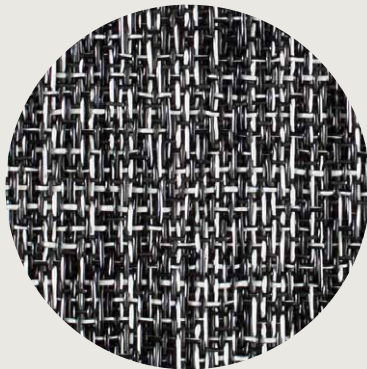
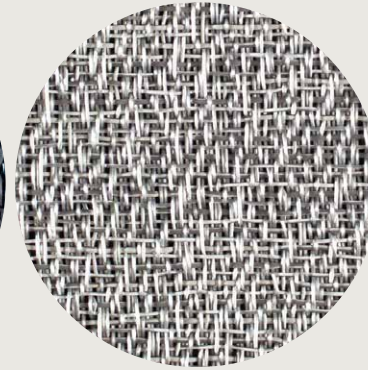
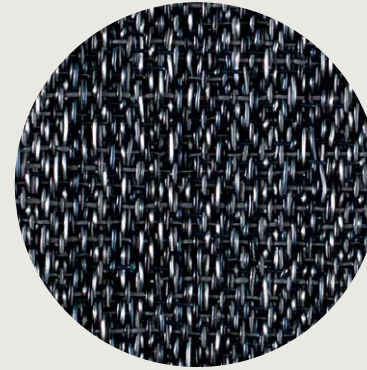
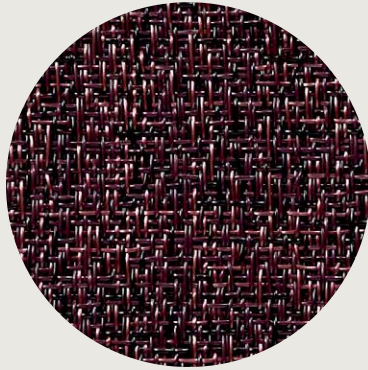
BARK
BLACK
CARBON

CHESTNUT
DENIM
EARTH

ICE
KHAKI
LATTE

NEW GOLD
OYSTER
TITANIUM

WHITE



BLACK/WHITE
BLUEBERRY - NEW

CABERNET - NEW
CITRON
COFFEE

CORN SILK
GREY

INK
MÉLANGE

MOON
NEWSPRINT - NEW
NOIR - NEW

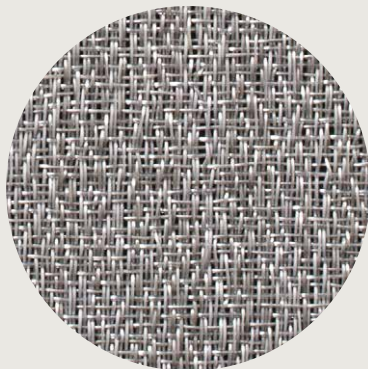
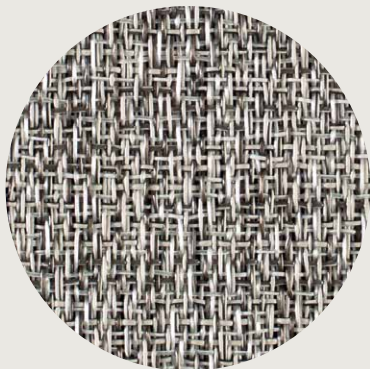
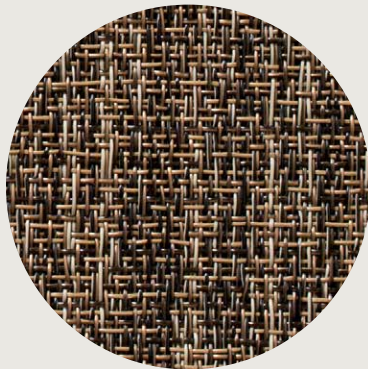
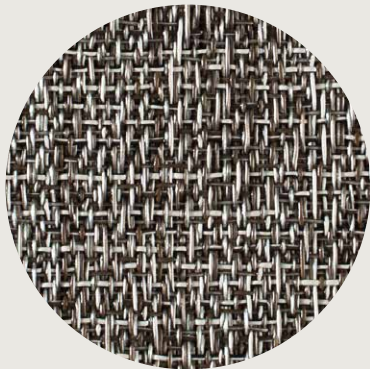
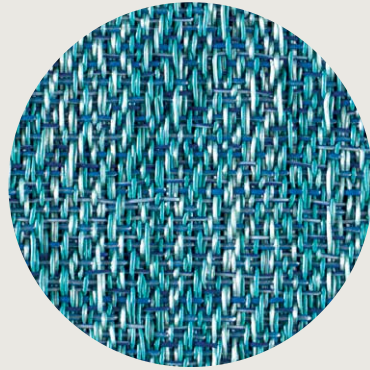
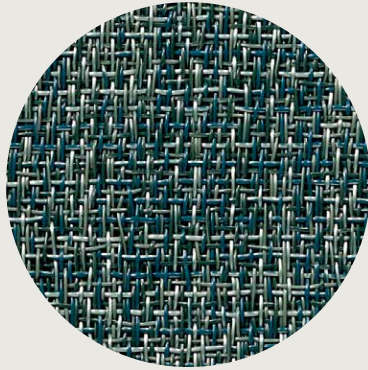
OCEAN - NEW
ORANGE

Bouclé™

BackLess® Wall Textiles,
Window Coverings

NEW Dart™

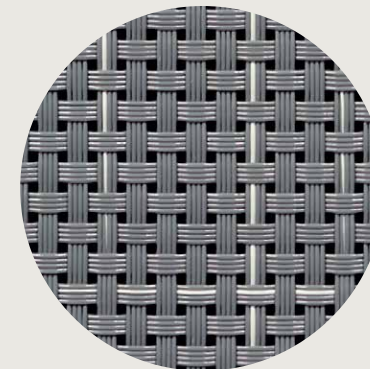
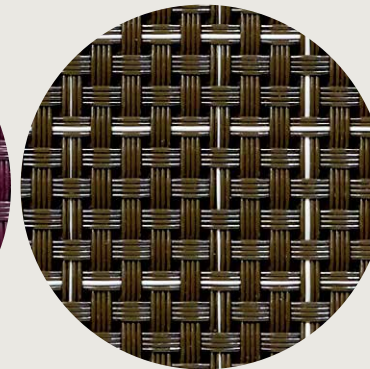
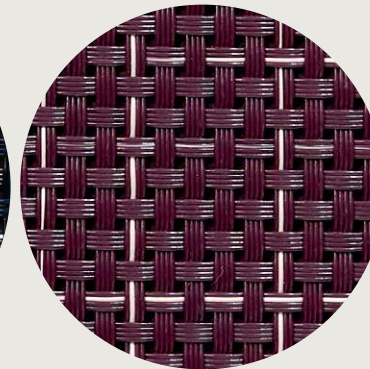
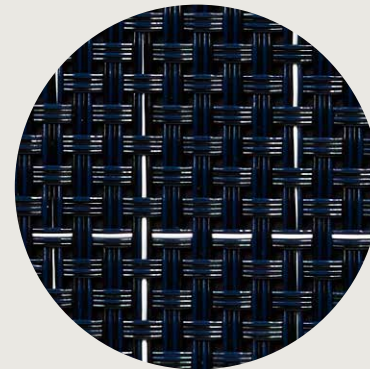
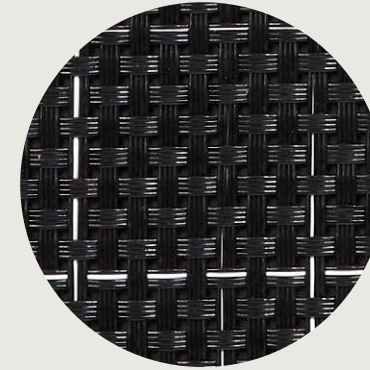
BackLess® Wall Textiles,
Window Coverings



PEBBLE
SALT

SEAWEED - NEW
SISAL
STERLING

TURQUOISE
WHITE/BLACK



MIDNIGHT

ONYX
PLUM
STORM

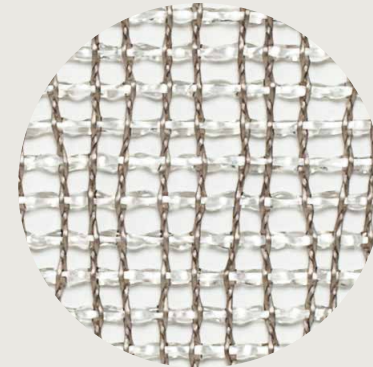
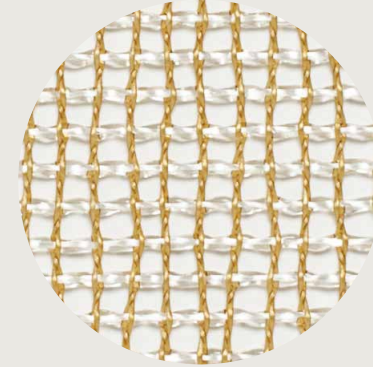
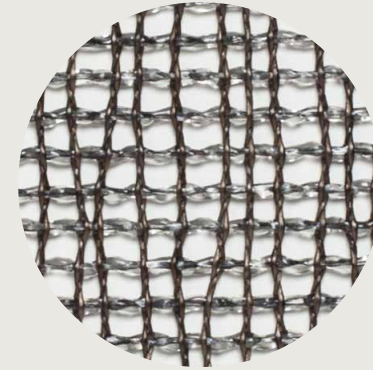
TOBACCO

●●
FG - Core

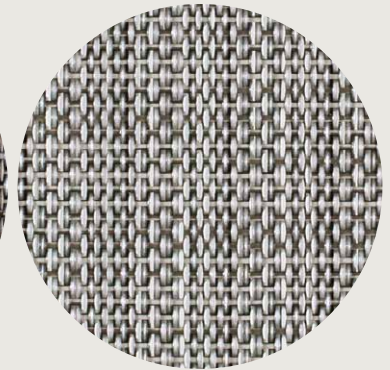
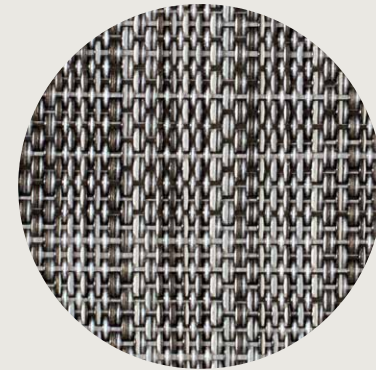
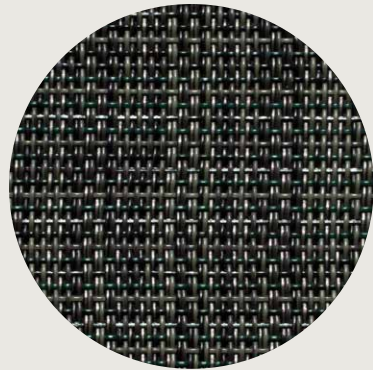
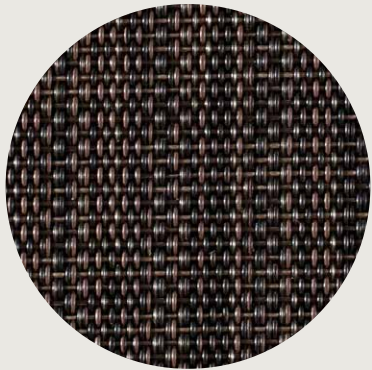
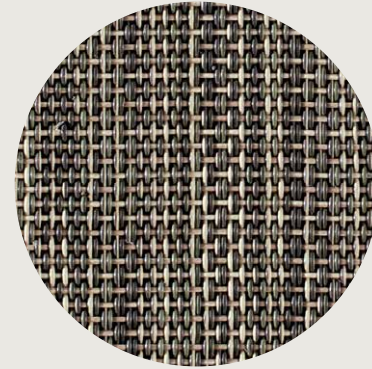
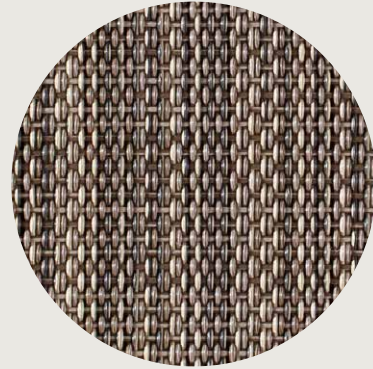
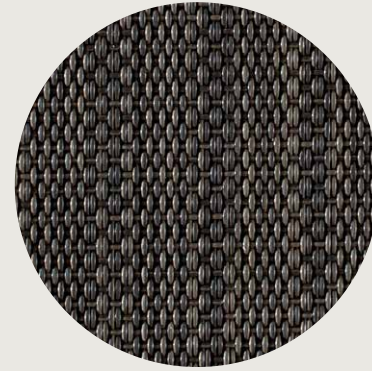
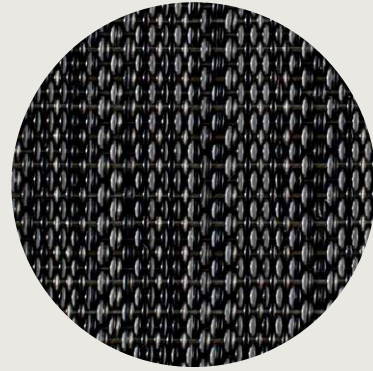
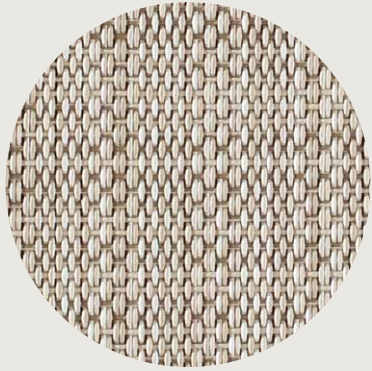
●●
FG - Core



MINERAL



CAVIAR
GOLD
SILVER



BONE

DARK BROWN

DARK GREEN

DEEP GREY
FAWN

SLATE
STONE

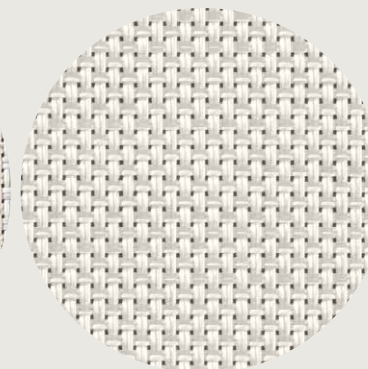
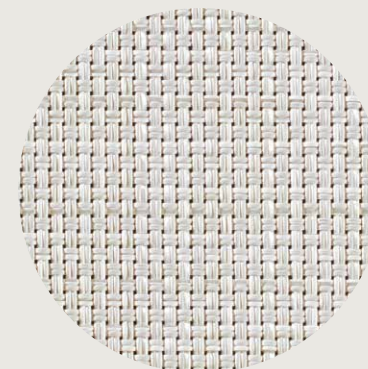
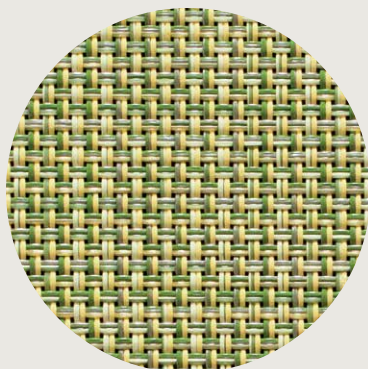
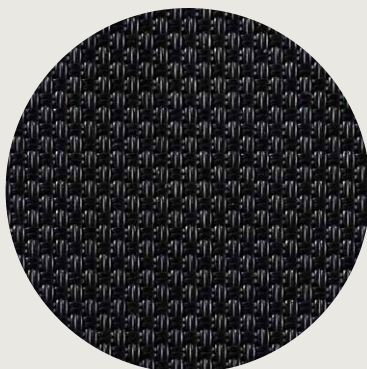
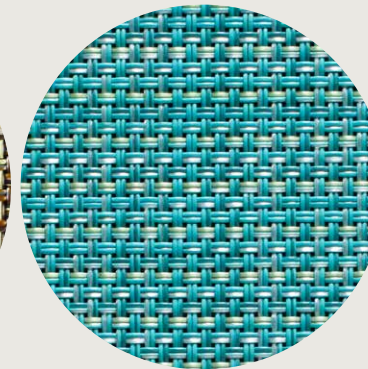
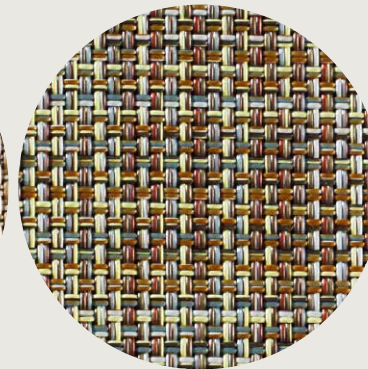
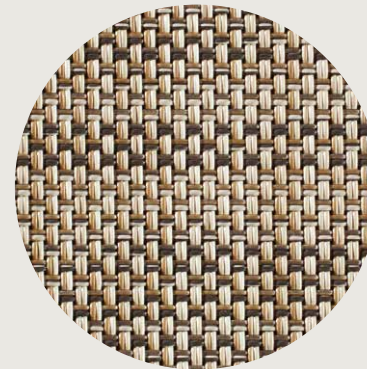
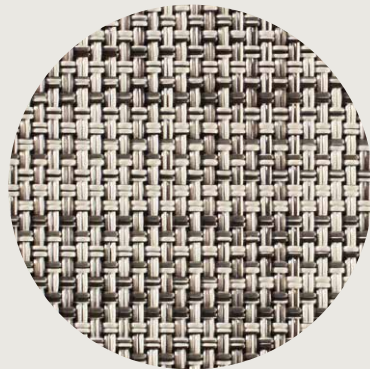
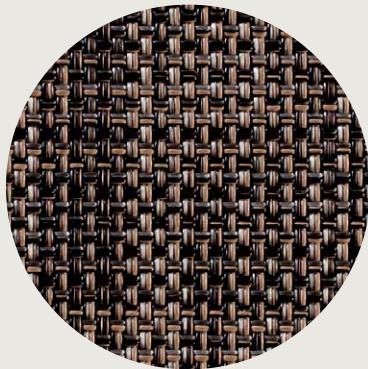
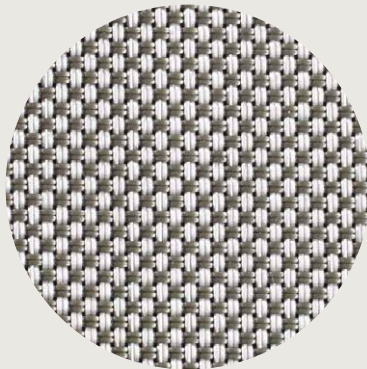
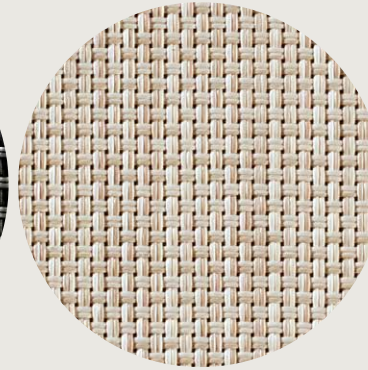
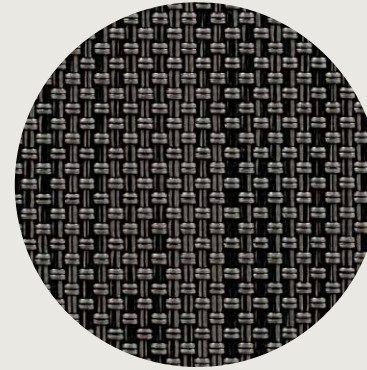
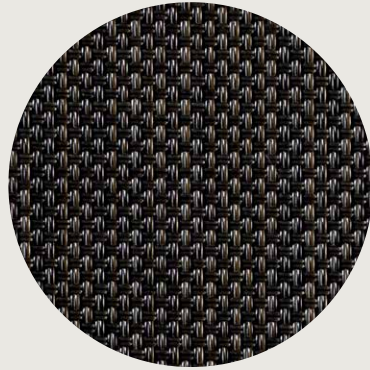
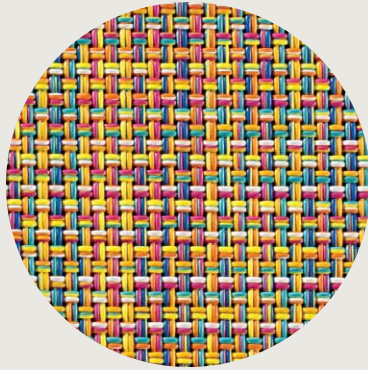
TWEED

WALNUT

WHITE/SILVER

Mini Basketweave™

BackLess® Wall Textiles,
Window Coverings, Upholstery Fabric



ALOE
BLACK

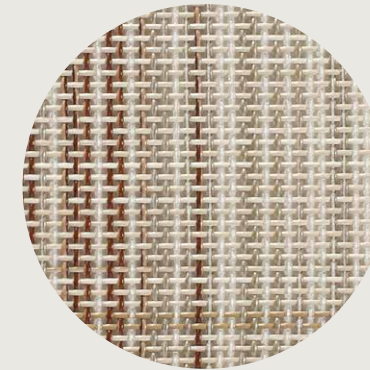
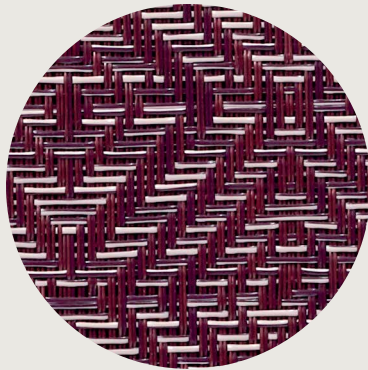
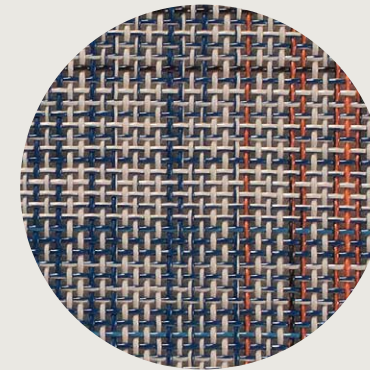
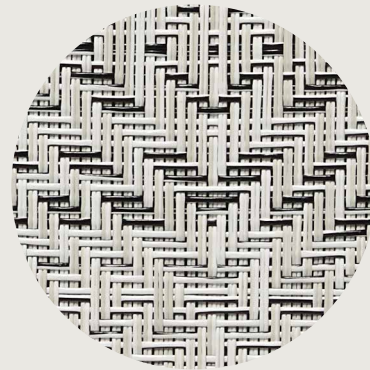
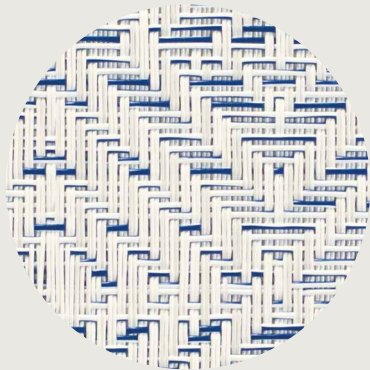
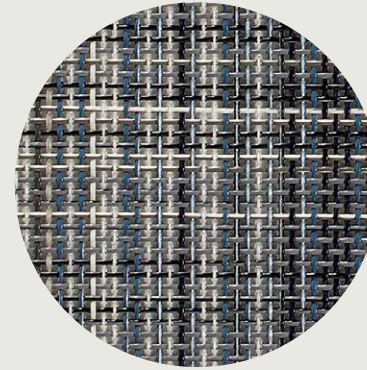
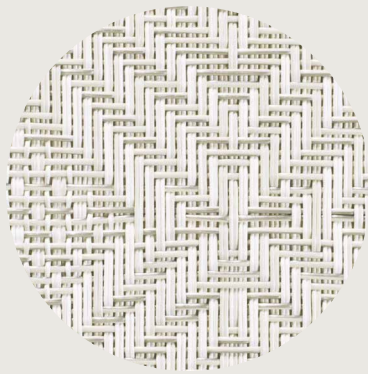
CONFETTI
DARK WALNUT
DILL

ESPRESSO
GRAVEL

LIGHT GREY
LINEN

PARCHMENT
PISTACHIO
SANDSTONE

TURQUOISE
WHITE



BLUE

GREY

WHITE/BLACK

GREY

MULTI

PLUM - NEW

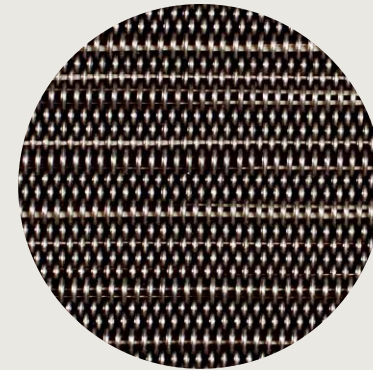
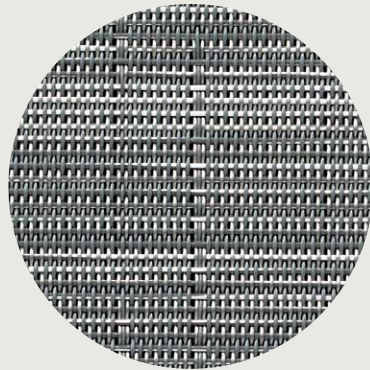
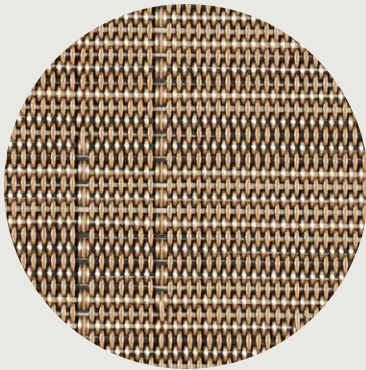
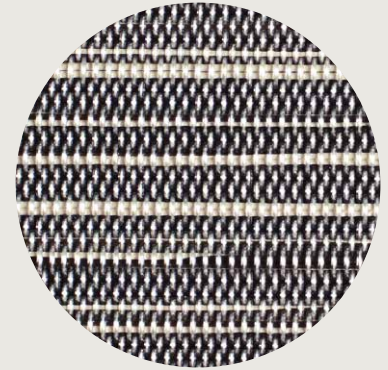
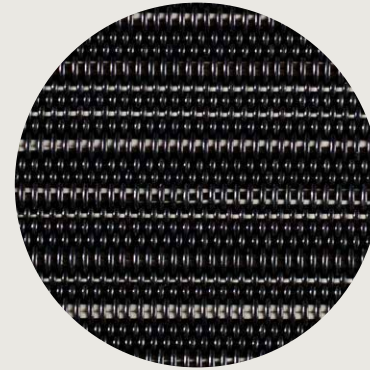
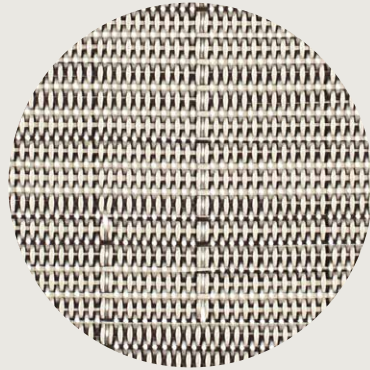
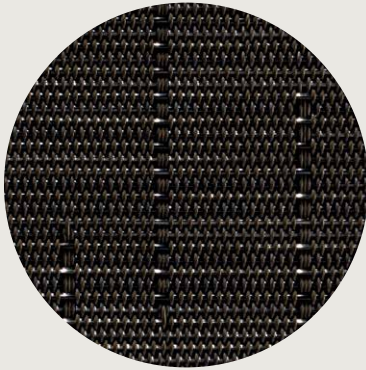
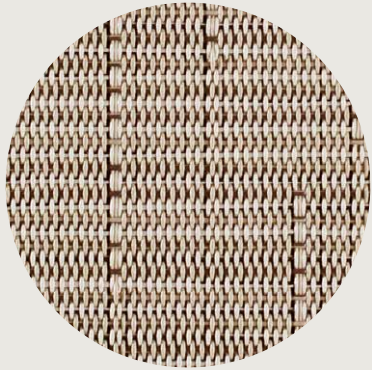
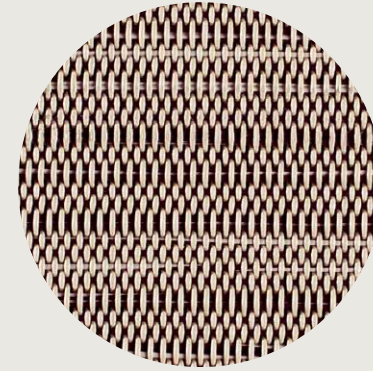
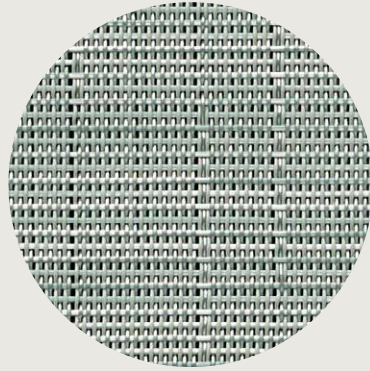
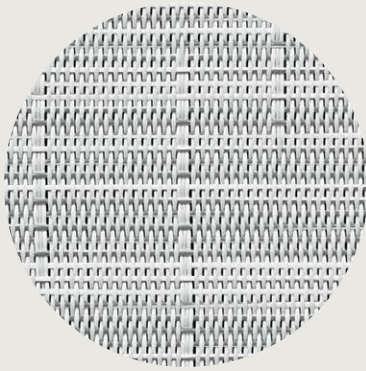
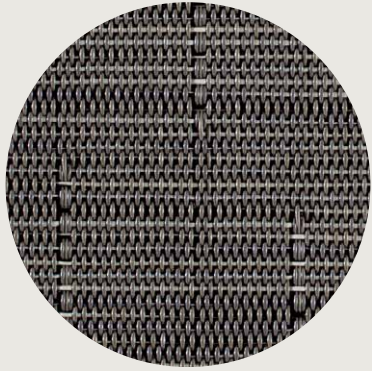
TAN

Reed™

BackLess® Wall Textiles,
Window Coverings

Rib Weave™

BackLess® Wall Textiles



ASH
BISQUE
CINNAMON

CLOUD - NEW
CLOVE
SANDBAR

SEAFOAM - NEW
SEASHELL
STEEL - NEW

BLACK

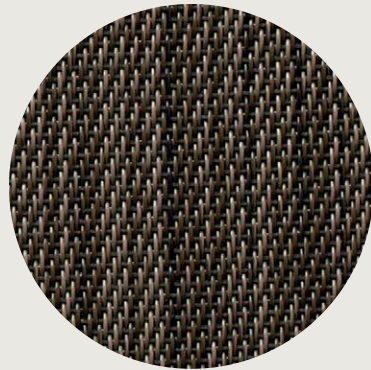
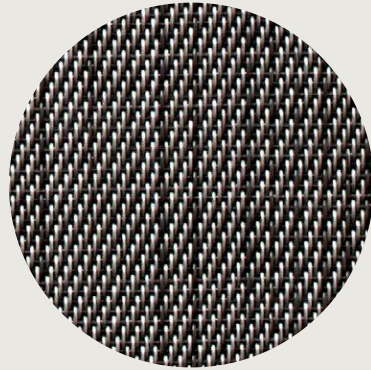
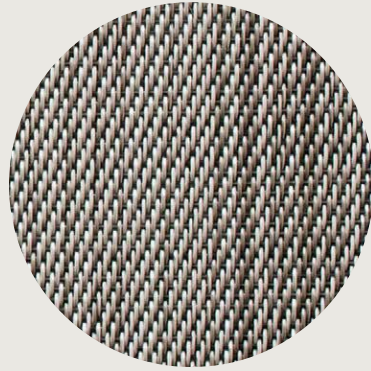
COCONUT

LEAD

PEARL

Shade™

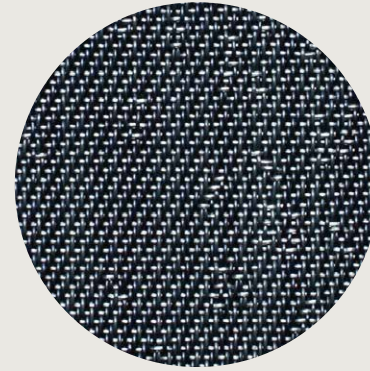
BackLess® Wall Textiles,
Window Coverings



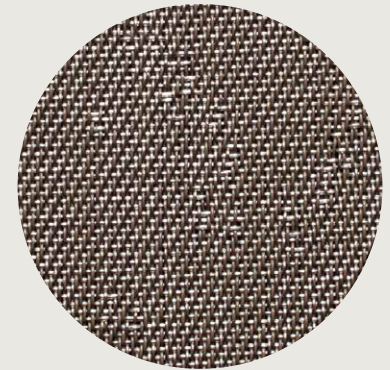
BIRCH
CHROME
HICKORY

Speckle™

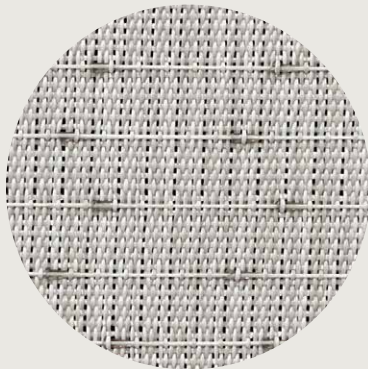
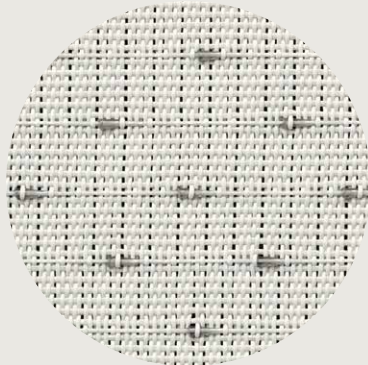
BackLess® Wall Textiles,
Window Coverings



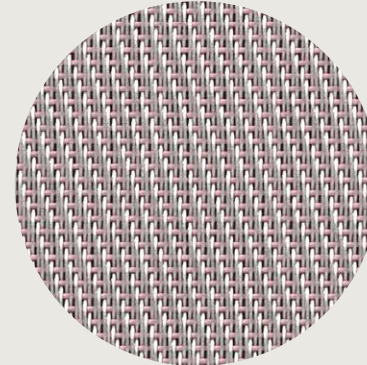
BLUE
MERCURY



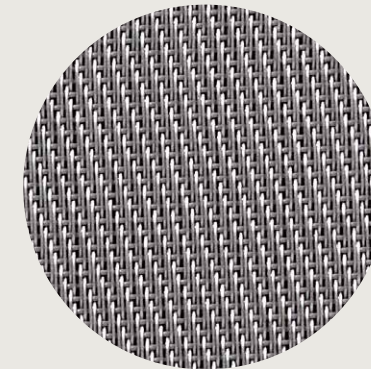
ONYX
TAUPE



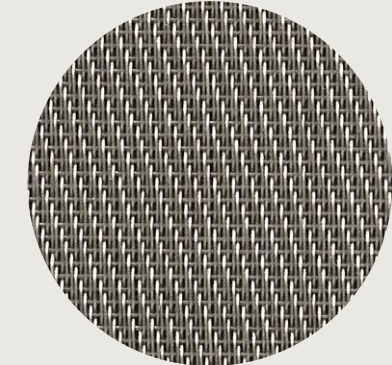
LIMESTONE
SHADOW
SNOW



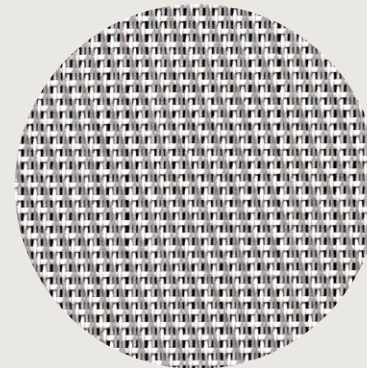
BLUSH
DOVE

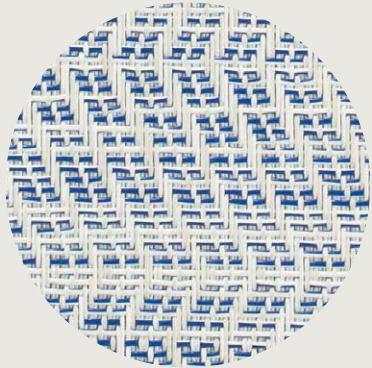


LEAD

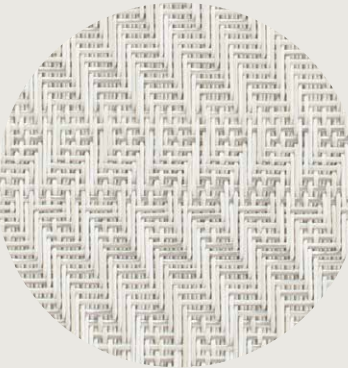


MICA
SHELL

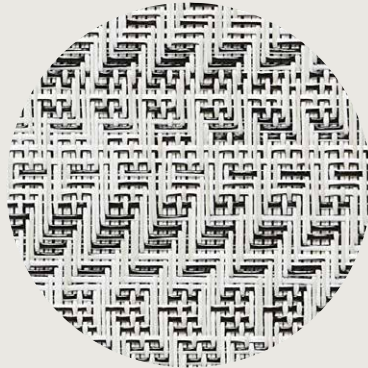




BLUE



GREY



WHITE/BLACK

Chilewich | Sultan LLC.
39 West 19th Street
New York, NY 10011

T +1 212 679 9204
F +1 212 679 9205
chilewichcontract.com

Chilewich, BackLess, BioFelt, and TerraStand are registered trademarks.
©2018 Chilewich | Sultan LLC. All rights reserved.



30% post-consumer recycled Mohawk
Bright White Via Smooth paper



900114-011

chilewich®